

## anti- S100A4 antibody

### Product Information

|               |   |
|---------------|---|
| Catalog No.:  | FNab07560   |
| Size:         | 100µg   |
| Form:         | liquid  |
| Purification: | Immunogen affinity purified   |
| Purity:       | ≥95% as determined by SDS-PAGE  |
| Host:         | Rabbit  |
| Clonality:    | polyclonal  |
| IsoType:      | IgG   |
| Storage:      | PBS with 0.02% sodium azide and 50% glycerol pH 7.3, -20°C for 12 months (Avoid repeated freeze / thaw cycles.) |

### Background

The protein encoded by this gene is a member of the S100 family of proteins containing 2 EF-hand calcium-binding motifs. S100 proteins are localized in the cytoplasm and/or nucleus of a wide range of cells, and involved in the regulation of a number of cellular processes such as cell cycle progression and differentiation. S100 genes include at least 13 members which are located as a cluster on chromosome 1q21. This protein may function in motility, invasion, and tubulin polymerization. Chromosomal rearrangements and altered expression of this gene have been implicated in tumor metastasis. Multiple alternatively spliced variants, encoding the same protein, have been identified.

### Immunogen information

|              |                                 |
|--------------|---------------------------------|
| Immunogen:   | S100 calcium binding protein A4 |
| Synonyms:    | CAPL, MTS1                      |
| Observed MW: | 12KDa                           |
| Uniprot ID : | P26447                          |

### Application

|             |                   |
|-------------|-------------------|
| Reactivity: | Human, Mouse, Rat |
|-------------|-------------------|

### Wuhan Fine Biotech Co., Ltd.

B9 Bld, High-Tech Medical Devices Park, No. 818 Gaoxin Ave. East Lake High-Tech Development Zone. Wuhan, Hubei, China(430206)

Tel : (0086)027-87384275

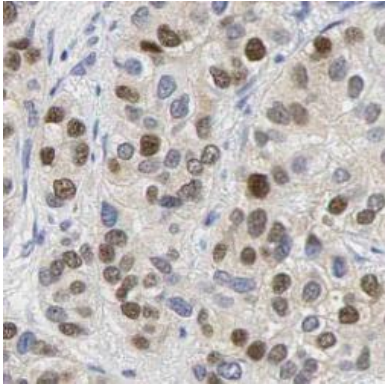
Fax: (0086)027-87800889

[www.fn-test.com](http://www.fn-test.com)

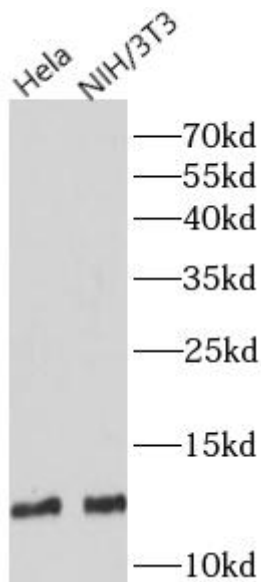
Tested Application: ELISA, WB, IHC, IF

Recommended dilution: WB: 1:500 - 1:2000; IHC: 1:50 - 1:200; IF: 1:50 - 1:200

Image:



Immunohistochemistry of paraffin-embedded human breast cancer tissue slide using FNab07560( S1004 Antibody) at dilution of 1:200



Various lysates were subjected to SDS PAGE followed by western blot with FNab07560(S100A4 antibody) at dilution of 1:1000