

anti- S1 tag antibody

Product Information

Catalog No.:	FNab07549
Size:	100µg
Form:	liquid
Purification:	Protein A+G purification
Purity:	≥95% as determined by SDS-PAGE
Host:	Mouse
Clonality:	monoclonal
Clone ID:	9A4
IsoType:	IgG1
Storage:	PBS with 0.02% sodium azide and 50% glycerol pH 7.3, -20°C for 12 months (Avoid repeated freeze / thaw cycles.)

Background

S1 tag, with sequence NANNPDWDF, is derived from the hepatitis B virus preS1 region. S1 tag is widely used in various protein expression systems. This antibody can detect the over-expressed fusion proteins containing S1 epitope tag.

Immunogen information

Immunogen:	peptide
Synonyms:	S1 tag, hepatitis B virus pre S1, S1, NANNPDWDF

Application

Reactivity:	Recombinant protein
Tested Application:	ELISA, WB
Recommended dilution:WB:	1:5000-1:50000
Image:	

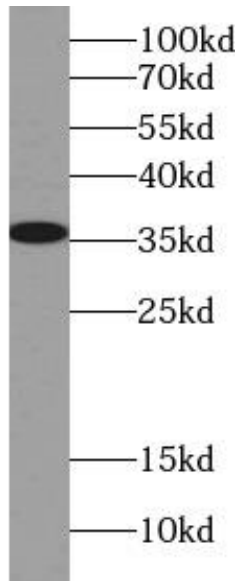
Wuhan Fine Biotech Co., Ltd.

B9 Bld, High-Tech Medical Devices Park, No. 818 Gaoxin Ave. East Lake High-Tech Development Zone. Wuhan, Hubei, China(430206)

Tel : (0086)027-87384275

Fax: (0086)027-87800889

www.fn-test.com



Recombinant protein were subjected to SDS PAGE followed by western blot with FNab07549(S1 tag Antibody) at dilution of 1:10000