

## anti- RSPH3 antibody

### Product Information

Catalog No.:	FNab07509
Size:	100µg
Form:	liquid
Purification:	Immunogen affinity purified
Purity:	≥95% as determined by SDS-PAGE
Host:	Rabbit
Clonality:	polyclonal
Clone ID:	None
IsoType:	IgG
Storage:	PBS with 0.02% sodium azide and 50% glycerol pH 7.3, -20°C for 12 months (Avoid repeated freeze / thaw cycles.)

### Background

Functions as a protein kinase A-anchoring protein that scaffolds the cAMP-dependent protein kinase holoenzyme. May serve as a point of convergence for MAPK and PKA signaling in cilia.

### Immunogen information

Immunogen:	radial spoke 3 homolog(Chlamydomonas)
Synonyms:	RSHL2, RSP3
Observed MW:	70 kDa
UniprotID :	Q86UC2

### Application

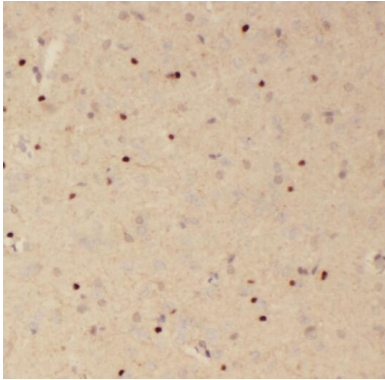
Reactivity:	Human, Mouse, Rat
Tested Application:	ELISA, WB, IHC
Recommended dilution:	WB: 1:500-1:2000; IHC: 1:20-1:200
Image:	

### Wuhan Fine Biotech Co., Ltd.

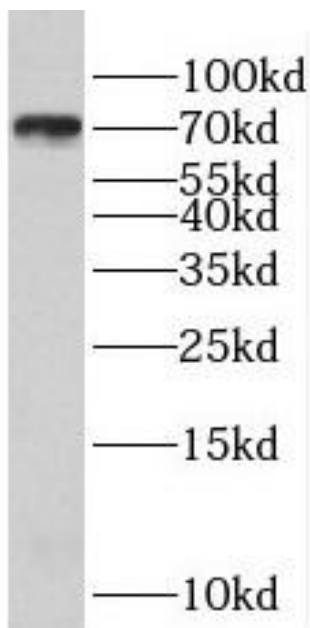
B9 Bld, High-Tech Medical Devices Park, No. 818 GaoxinAve. East Lake High-Tech Development Zone. Wuhan, Hubei, China(430206)

Tel : (0086)027-87384275

Fax: (0086)027-87800889 [www.fn-test.com](http://www.fn-test.com)



Immunohistochemistry of paraffin-embedded human brain using FNab07509(RSPH3 antibody) at dilution of 1:50



human brain tissue were subjected to SDS PAGE followed by western blot with FNab07509(RSPH3 antibody) at dilution of 1:600