

anti- RSL24D1 antibody

Product Information

Catalog No.:	FNab07508
Size:	100µg
Form:	liquid
Purification:	Immunogen affinity purified
Purity:	≥95% as determined by SDS-PAGE
Host:	Rabbit
Clonality:	polyclonal
Clone ID:	None
IsoType:	IgG
Storage:	PBS with 0.02% sodium azide and 50% glycerol pH 7.3, -20°C for 12 months (Avoid repeated freeze / thaw cycles.)

Background

Involved in the biogenesis of the 60S ribosomal subunit. Ensures the docking of GTPBP4/NOG1 to pre-60S particles(By similarity).

Immunogen information

Immunogen:	ribosomal L24 domain containing 1
Synonyms:	C15orf15, RPL24L
Observed MW:	20 kDa
UniprotID :	Q9UHA3

Application

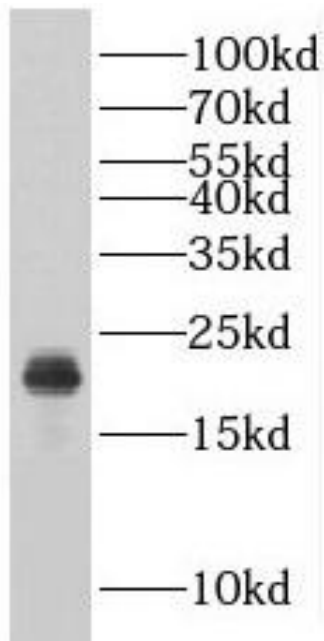
Reactivity:	Human
Tested Application:	ELISA, IF, WB
Recommended dilution:	WB: 1:500-1:2000; IF: 1:20-1:200
Image:	

Wuhan Fine Biotech Co., Ltd.

B9 Bld, High-Tech Medical Devices Park, No. 818 GaoxinAve.East Lake High-Tech Development Zone.Wuhan, Hubei, China(430206)

Tel : (0086)027-87384275

Fax: (0086)027-87800889 www.fn-test.com



HepG2 cells were subjected to SDS PAGE followed by western blot with FNab07508(RSL24D1 Antibody) at dilution of 1:600