

anti- RPS25 antibody

Product Information

Catalog No.:	FNab07468
Size:	100µg
Form:	liquid
Purification:	Immunogen affinity purified
Purity:	≥95% as determined by SDS-PAGE
Host:	Rabbit
Clonality:	polyclonal
Clone ID:	None
IsoType:	IgG
Storage:	PBS with 0.02% sodium azide and 50% glycerol pH 7.3, -20°C for 12 months (Avoid repeated freeze / thaw cycles.)

Background

Ribosomal protein S25(RPS25) is a novel MDM2 interacting protein. It may be involved in viral replication of Dicistroviridae and hepatitis C viruses. RPS25 is overexpressed in human leukemia cells exhibiting adriamycin resistance. It may have a role in p53-mediated apoptosis and cell-cycle arrest. The expected MW of RPS25 is about 15-17kDa.

Immunogen information

Immunogen:	ribosomal protein S25
Synonyms:	40S ribosomal protein S25, ribosomal protein S25, RPS25
Observed MW:	15-17 kDa
Uniprot ID :	P62851

Application

Reactivity:	Human
Tested Application:	ELISA, WB, IHC
Recommended dilution:	WB: 1:500-1:5000; IHC: 1:20-1:200; IF: 1:20-1:200

Wuhan Fine Biotech Co., Ltd.

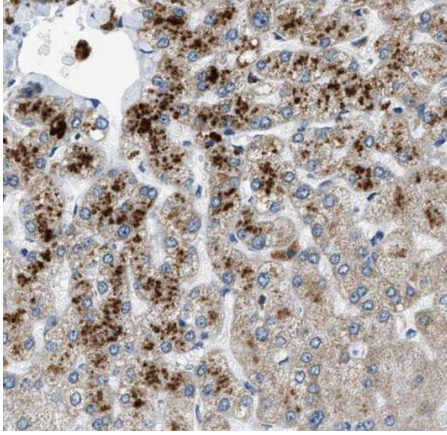
B9 Bld, High-Tech Medical Devices Park, No. 818 Gaoxin Ave. East Lake High-Tech Development Zone. Wuhan, Hubei, China(430206)

Tel : (0086)027-87384275

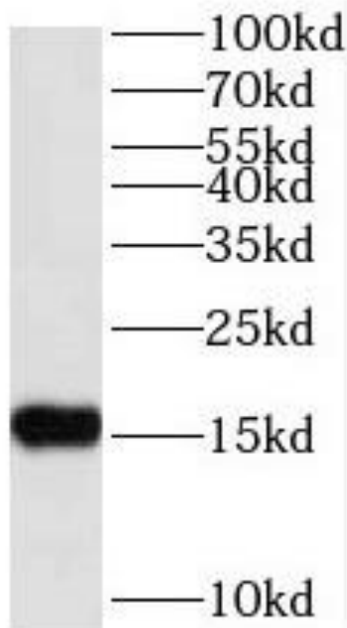
Fax: (0086)027-87800889

www.fn-test.com

Image:



Immunohistochemistry of paraffin-embedded human liver slide using FNab07468(RPS25 Antibody) at dilution of 1:50



Jurkat cells were subjected to SDS PAGE followed by western blot with FNab07468(RPS25 antibody) at dilution of 1:1000

Wuhan Fine Biotech Co., Ltd.

B9 Bld, High-Tech Medical Devices Park, No. 818 Gaoxin Ave. East Lake High-Tech Development Zone. Wuhan, Hubei, China(430206)

Tel : (0086)027-87384275

Fax: (0086)027-87800889

www.fn-test.com