

anti- ROM1 antibody

Product Information

| | |
|---------------|---|
| Catalog No.: | FNab07382 |
| Size: | 100µg |
| Form: | liquid |
| Purification: | Immunogen affinity purified |
| Purity: | ≥95% as determined by SDS-PAGE |
| Host: | Rabbit |
| Clonality: | polyclonal |
| Clone ID: | None |
| IsoType: | IgG |
| Storage: | PBS with 0.02% sodium azide and 50% glycerol pH 7.3, -20°C for 12 months (Avoid repeated freeze / thaw cycles.) |

Background

May function as an adhesion molecule involved in stabilization and compaction of outer segment disks or in the maintenance of the curvature of the rim. It is essential for disk morphogenesis.

Immunogen information

| | |
|--------------|--|
| Immunogen: | retinal outer segment membrane protein 1 |
| Synonyms: | TSPAN23 |
| Observed MW: | 37-45 kDa |
| UniprotID : | Q03395 |

Application

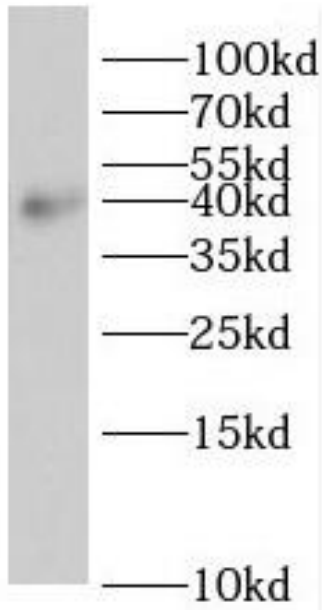
| | |
|-----------------------|----------------------------------|
| Reactivity: | Human, Mouse |
| Tested Application: | ELISA, WB, IF |
| Recommended dilution: | WB: 1:500-1:2000; IF: 1:20-1:200 |
| Image: | |

Wuhan Fine Biotech Co., Ltd.

B9 Bld, High-Tech Medical Devices Park, No. 818 GaoxinAve. East Lake High-Tech Development Zone. Wuhan, Hubei, China(430206)

Tel : (0086)027-87384275

Fax: (0086)027-87800889 www.fn-test.com



mouse eye tissue were subjected to SDS PAGE followed by western blot with FNab07382(ROM1 antibody) at dilution of 1:400