

anti- RFC5 antibody

Product Information

Catalog No.:	FNab07251
Size:	100µg
Form:	liquid
Purification:	Immunogen affinity purified
Purity:	≥95% as determined by SDS-PAGE
Host:	Rabbit
Clonality:	polyclonal
Clone ID:	None
IsoType:	IgG
Storage:	PBS with 0.02% sodium azide and 50% glycerol pH 7.3, -20°C for 12 months (Avoid repeated freeze / thaw cycles.)

Background

This gene encodes the smallest subunit of the replication factor C complex, which consists of five distinct subunits (140, 40, 38, 37, and 36 kDa) and is required for DNA replication. This subunit interacts with the C-terminal region of proliferating cell nuclear antigen and is required to open and load proliferating cell nuclear antigen onto DNA during S phase. It is a member of the AAA+ (ATPases associated with various cellular activities) ATPase family and forms a core complex with the 38 and 40 kDa subunits that possesses DNA-dependent ATPase activity. A related pseudogene has been identified on chromosome 9. Alternative splicing results in multiple transcript variants.

Immunogen information

Immunogen:	replication factor C (activator 1) 5, 36.5kDa
Synonyms:	None
Observed MW:	38 kDa
UniprotID :	P40937

Application

Wuhan Fine Biotech Co., Ltd.

B9 Bld, High-Tech Medical Devices Park, No. 818 GaoxinAve. East Lake High-Tech Development Zone. Wuhan, Hubei, China(430206)

Tel : (0086)027-87384275

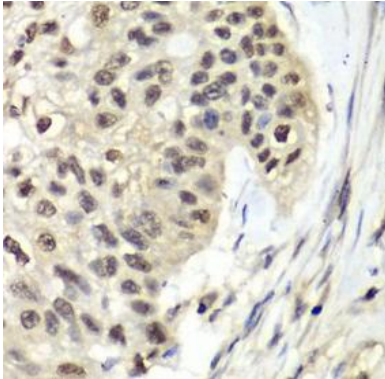
Fax: (0086)027-87800889 www.fn-test.com

Reactivity: Human, Mouse

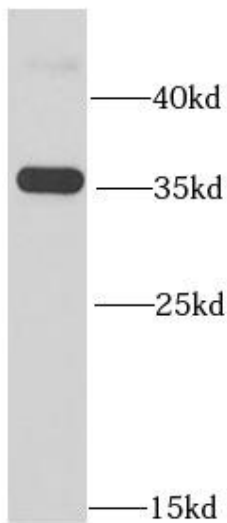
Tested Application: ELISA, WB, IHC

Recommended dilution: WB: 1:500 - 1:2000; IHC: 1:50 - 1:200

Image:



Immunohistochemistry of paraffin-embedded human lung cancer using FNab07251(RFC5 antibody) at dilution of 1:100



HeLa cells were subjected to SDS PAGE followed by western blot with FNab07251(RFC5 antibody) at dilution of 1:1000

Wuhan Fine Biotech Co., Ltd.

B9 Bld, High-Tech Medical Devices Park, No. 818 GaoxinAve. East Lake High-Tech Development Zone. Wuhan, Hubei, China(430206)

Tel : (0086)027-87384275

Fax: (0086)027-87800889 www.fn-test.com