

anti- REDD1 specific antibody

Product Information

Catalog No.:	FNab07228
Size:	100µg
Form:	liquid
Purification:	Immunogen affinity purified
Purity:	≥95% as determined by SDS-PAGE
Host:	Rabbit
Clonality:	polyclonal
Clone ID:	None
IsoType:	IgG
Storage:	PBS with 0.02% sodium azide and 50% glycerol pH 7.3, -20°C for 12 months (Avoid repeated freeze / thaw cycles.)

Background

REDD1, also named as RTP801 and DDIT4, belongs to the DDIT4 family. Its function: Regulates cell growth, proliferation and survival via inhibition of the activity of the mammalian target of rapamycin complex 1 (mTORC1). Inhibition of mTORC1 is mediated by a pathway that involves DDIT4/REDD1, AKT1, the TSC1-TSC2 complex and the GTPase RHEB. Plays an important role in responses to cellular energy levels and cellular stress, including responses to hypoxia and DNA damage. Regulates p53/TP53-mediated apoptosis in response to DNA damage via its effect on mTORC1 activity. Its role in the response to hypoxia depends on the cell type; it mediates mTORC1 inhibition in fibroblasts and thymocytes, but not in hepatocytes (By similarity). Required for mTORC1-mediated defense against viral protein synthesis and virus replication (By similarity). Inhibits neuronal differentiation and neurite outgrowth mediated by NGF via its effect on mTORC1 activity. Required for normal neuron migration during embryonic brain development. Plays a role in neuronal cell death. This antibody is specific to the REDD1.

Immunogen information

Immunogen:	DNA-damage-inducible transcript 4
Synonyms:	HIF-1 responsive protein RTP801, Protein regulated in development and DNA damage response 1, REDD-1, REDD1, RTP801, DDIT4
Observed MW:	35 kDa

Wuhan Fine Biotech Co., Ltd.

B9 Bld, High-Tech Medical Devices Park, No. 818 Gaoxin Ave. East Lake High-Tech Development Zone. Wuhan, Hubei, China (430206)

Tel : (0086)027-87384275

Fax: (0086)027-87800889 www.fn-test.com

UniprotID : Q9NX09

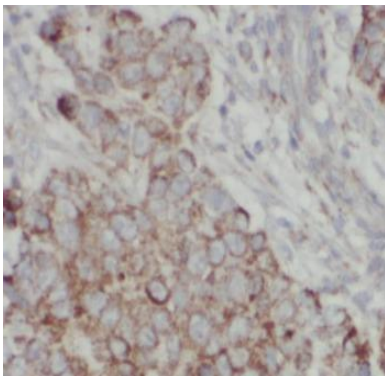
Application

Reactivity: Human, Mouse, Rat

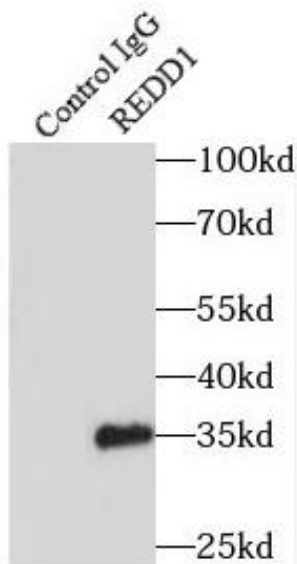
Tested Application: ELISA, IHC, IP, WB

Recommended dilution: WB: 1:500-1:5000; IP: 1:200-1:2000; IHC: 1:50-1:200

Image:



Immunohistochemistry of paraffin-embedded human breast cancer using FNab07228(REDDD1 antibody) at dilution of 1:100



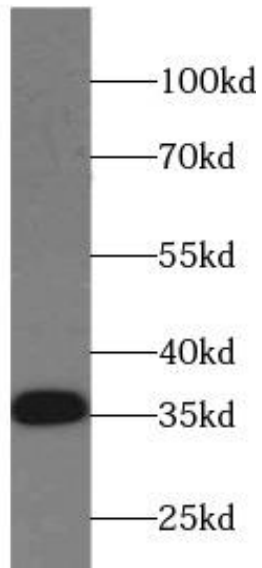
IP Result of anti-REDDD1 specific (IP:FNab07228, 3ug; Detection:FNab07228 1:500) with MCF-7 cells lysate 2500ug.

Wuhan Fine Biotech Co., Ltd.

B9 Bld, High-Tech Medical Devices Park, No. 818 GaoxinAve. East Lake High-Tech Development Zone. Wuhan, Hubei, China(430206)

Tel : (0086)027-87384275

Fax: (0086)027-87800889 www.fn-test.com



PC-3 cells were subjected to SDS PAGE followed by western blot with FNab07228(REDD1 antibody) at dilution of 1:1000