

anti- RBM15 antibody

Product Information

Catalog No.:	FNab07163
Size:	100µg
Form:	liquid
Purification:	Protein A+G purification
Purity:	≥95% as determined by SDS-PAGE
Host:	Mouse
Clonality:	monoclonal
Clone ID:	6B1
IsoType:	IgG1
Storage:	PBS with 0.02% sodium azide and 50% glycerol pH 7.3, -20°C for 12 months (Avoid repeated freeze / thaw cycles.)

Background

May function as an mRNA export factor, stimulating export and expression of RTE-containing mRNAs which are present in many retrotransposons that require to be exported prior to splicing. High affinity binding of pre-mRNA to RBM15 may allow targeting of the mRNP to the export helicase DBP5 in a manner that is independent of splicing-mediated NXF1 deposition, resulting in export prior to splicing. May be implicated in HOX gene regulation.

Immunogen information

Immunogen:	RNA binding motif protein 15
Synonyms:	FLJ12479, FLJ21943, One twenty two protein 1, OTT, OTT1, RBM15, RNA binding motif protein 15, SPEN
Observed MW:	107 kDa
UniprotID :	Q96T37

Application

Reactivity:	Human
Tested Application:	ELISA, WB, IHC, IF, IP

Wuhan Fine Biotech Co., Ltd.

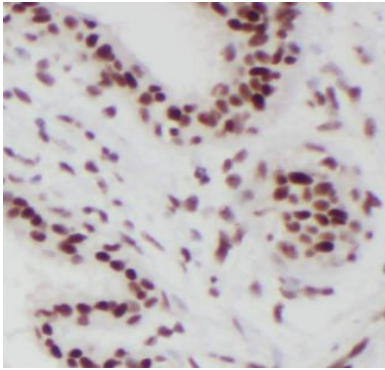
B9 Bld, High-Tech Medical Devices Park, No. 818 GaoxinAve. East Lake High-Tech Development Zone. Wuhan, Hubei, China(430206)

Tel : (0086)027-87384275

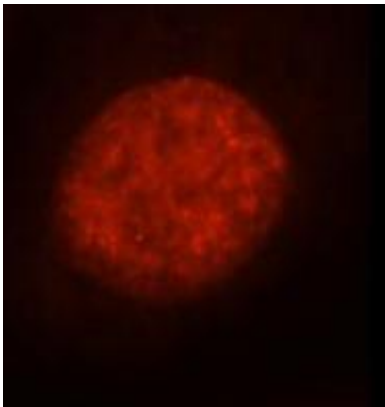
Fax: (0086)027-87800889 www.fn-test.com

Recommended dilution: WB: 1:500-1:2000; IP: 1:500-1:1000; IHC: 1:200-1:800; IF: 1:10-1:100

Image:



Immunohistochemistry of paraffin-embedded human breast cancer tissue slide using FNab07163(RBM15 antibody) at dilution of 1:500



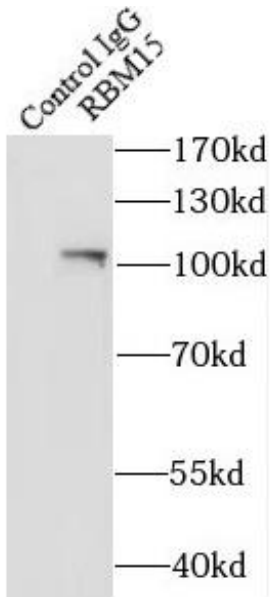
Immunofluorescent analysis of HeLa cells, using FNab07163(RBM15 antibody) at 1:25 dilution and Rhodamine-labeled goat anti-mouse IgG (red).

Wuhan Fine Biotech Co., Ltd.

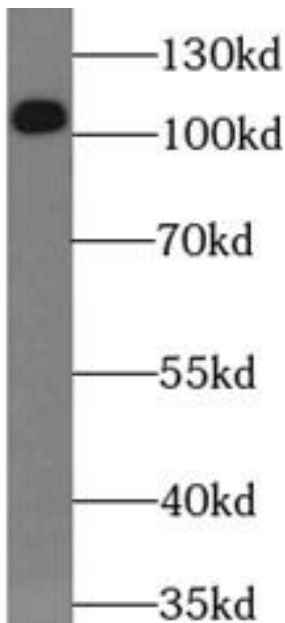
B9 Bld, High-Tech Medical Devices Park, No. 818 GaoxinAve. East Lake High-Tech Development Zone. Wuhan, Hubei, China(430206)

Tel : (0086)027-87384275

Fax: (0086)027-87800889 www.fn-test.com



IP result of anti-RBM15(IP:FNab07163, 4ug;
Detection:FNab07163 1:500) with HEK-293 cells
lysate 2600 ug



HeLa cells were subjected to SDS PAGE followed
by western blot with FNab07163(RBM15
antibody) at dilution of 1:1000