
anti-Rb antibody

Product Information

Catalog No.:	FNab07140
Size:	100µg
Form:	liquid
Purification:	Immunogen affinity purified
Purity:	≥95% as determined by SDS-PAGE
Host:	Rabbit
Clonality:	polyclonal
Clone ID:	None
IsoType:	IgG
Storage:	PBS with 0.02% sodium azide and 50% glycerol pH 7.3, -20°C for 12 months (Avoid repeated freeze / thaw cycles.)

Background

None

Immunogen information

Immunogen:	retinoblastoma 1
Synonyms:	OSRC, p105 Rb, pp110, pRb, RB, RB1, retinoblastoma 1
Observed MW:	110 kDa
UniprotID :	P06400

Application

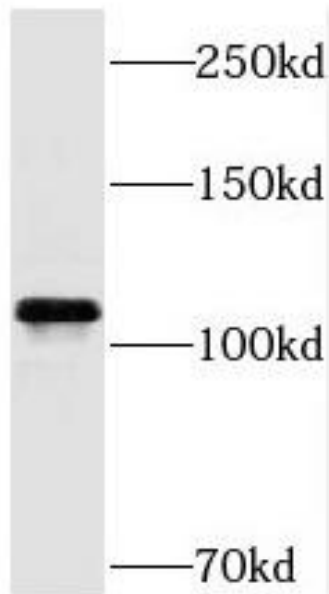
Reactivity:	Human, Mouse, Rat, Zebrafish
Tested Application:	ELISA, WB
Recommended dilution:WB:	1:500-1:2000
Image:	

Wuhan Fine Biotech Co., Ltd.

B9 Bld, High-Tech Medical Devices Park, No. 818 GaoxinAve. East Lake High-Tech Development Zone. Wuhan, Hubei, China(430206)

Tel : (0086)027-87384275

Fax: (0086)027-87800889 www.fn-test.com



HT-1080 cells were subjected to SDS PAGE followed by western blot with FNab07140(Rb antibody) at dilution of 1:500