

## anti- RABL2A antibody

### Product Information

Catalog No.:	FNab07061
Size:	100µg
Form:	liquid
Purification:	Immunogen affinity purified
Purity:	≥95% as determined by SDS-PAGE
Host:	Rabbit
Clonality:	polyclonal
Clone ID:	None
IsoType:	IgG
Storage:	PBS with 0.02% sodium azide and 50% glycerol pH 7.3, -20°C for 12 months (Avoid repeated freeze / thaw cycles.)

### Background

Plays an essential role in male fertility, sperm intra-flagellar transport, and tail assembly. Binds, in a GTP-regulated manner, to a specific set of effector proteins including key proteins involved in cilia development and function and delivers them into the growing sperm tail(By similarity).

### Immunogen information

Immunogen:	RAB, member of RAS oncogene family-like 2A
Synonyms:	None
Observed MW:	26 kDa
UniprotID :	Q9UBK7

### Application

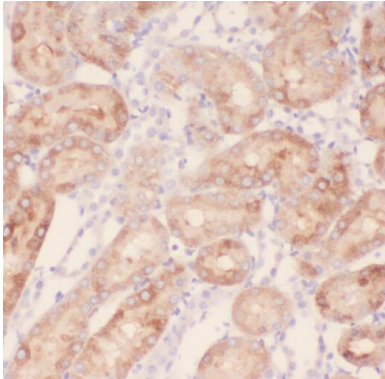
Reactivity:	Human, Mouse, Rat
Tested Application:	ELISA, WB, IHC
Recommended dilution:	WB: 1:500-1:2000; IHC: 1:20-1:200
Image:	

### Wuhan Fine Biotech Co., Ltd.

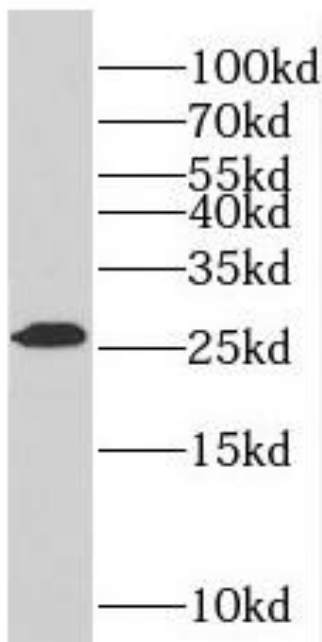
B9 Bld, High-Tech Medical Devices Park, No. 818 GaoxinAve.East Lake High-Tech Development Zone.Wuhan, Hubei, China(430206)

Tel :( 0086)027-87384275

Fax: (0086)027-87800889 [www.fn-test.com](http://www.fn-test.com)



Immunohistochemistry of paraffin-embedded human kidney using FNab07061(RABL2A antibody) at dilution of 1:50



mouse pancreas tissue were subjected to SDS PAGE followed by western blot with FNab07061(RABL2A antibody) at dilution of 1:300