

anti- PYGL antibody

Product Information

Catalog No.:	FNab06975
Size:	100µg
Form:	liquid
Purification:	Immunogen affinity purified
Purity:	≥95% as determined by SDS-PAGE
Host:	Rabbit
Clonality:	polyclonal
Clone ID:	None
IsoType:	IgG
Storage:	PBS with 0.02% sodium azide and 50% glycerol pH 7.3, -20°C for 12 months (Avoid repeated freeze / thaw cycles.)

Background

Phosphorylase is an important allosteric enzyme in carbohydrate metabolism. Enzymes from different sources differ in their regulatory mechanisms and in their natural substrates. However, all known phosphorylases share catalytic and structural properties.

Immunogen information

Immunogen:	phosphorylase, glycogen, liver
Synonyms:	GSD6, phosphorylase, glycogen, liver, PYGL
Observed MW:	97 kDa
UniprotID :	P06737

Application

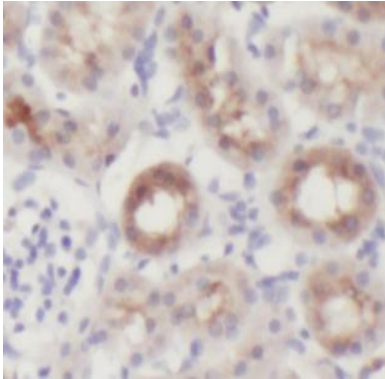
Reactivity:	Human, Mouse, Rat
Tested Application:	ELISA, IHC, WB, IP, IF
Recommended dilution:	WB: 1:500-1:3000; IP: 1:500-1:5000; IHC: 1:20-1:200; IF: 1:20-1:200
Image:	

Wuhan Fine Biotech Co., Ltd.

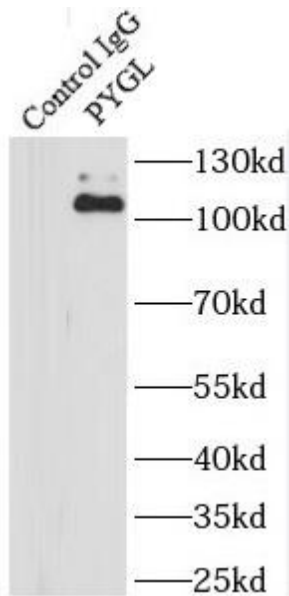
B9 Bld, High-Tech Medical Devices Park, No. 818 GaoxinAve. East Lake High-Tech Development Zone. Wuhan, Hubei, China(430206)

Tel : (0086)027-87384275

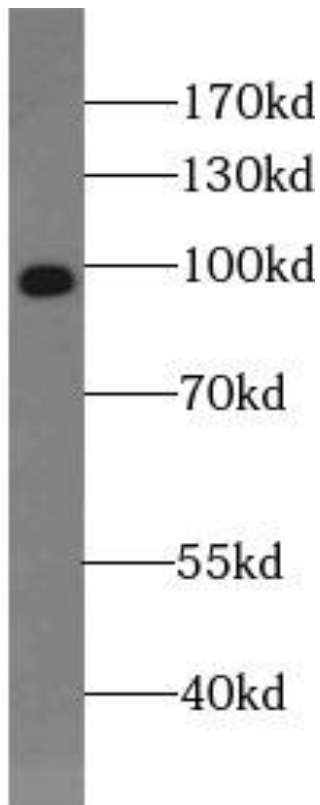
Fax: (0086)027-87800889 www.fn-test.com



Immunohistochemistry of paraffin-embedded human kidney using FNab06975(PYGL antibody) at dilution of 1:100



IP Result of anti-PYGL (IP:FNab06975, 4ug; Detection:FNab06975 1:1000) with mouse liver tissue lysate 4000ug.



HeLa cells were subjected to SDS PAGE followed by western blot with FNab06975(PYGL Antibody) at dilution of 1:1000