

anti- PRUNE antibody

Product Information

Catalog No.:	FNab06836
Size:	100µg
Form:	liquid
Purification:	Immunogen affinity purified
Purity:	≥95% as determined by SDS-PAGE
Host:	Rabbit
Clonality:	polyclonal
Clone ID:	None
IsoType:	IgG
Storage:	PBS with 0.02% sodium azide and 50% glycerol pH 7.3, -20°C for 12 months (Avoid repeated freeze / thaw cycles.)

Background

Phosphodiesterase(PDE) that has higher activity toward cAMP than cGMP, as substrate. Plays a role in cell proliferation, is able to induce cell motility and acts as a negative regulator of NME1.

Immunogen information

Immunogen:	prune homolog(Drosophila)
Synonyms:	None
Observed MW:	60 kDa
UniprotID :	Q86TP1

Application

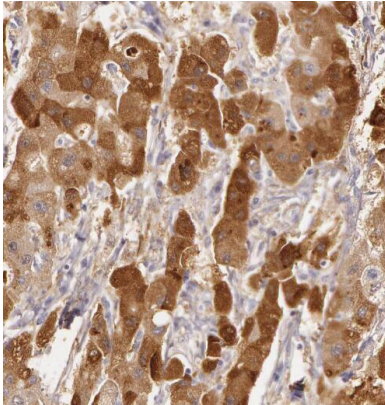
Reactivity:	Human, Mouse, Rat
Tested Application:	ELISA, WB, IHC, IF, IP
Recommended dilution:	WB: 1:500-1:2000; IP: 1:200-1:1000; IHC: 1:20-1:200; IF: 1:20-1:200
Image:	

Wuhan Fine Biotech Co., Ltd.

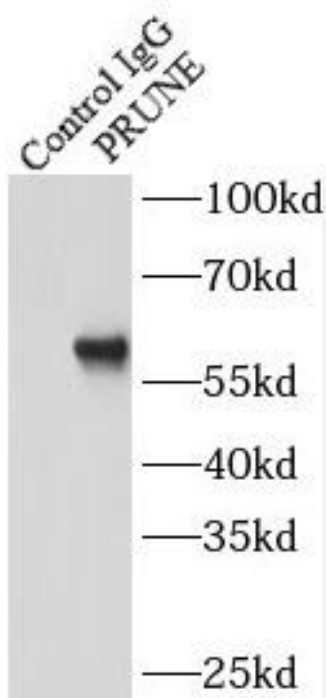
B9 Bld, High-Tech Medical Devices Park, No. 818 GaoxinAve.East Lake High-Tech Development Zone.Wuhan, Hubei, China(430206)

Tel : (0086)027-87384275

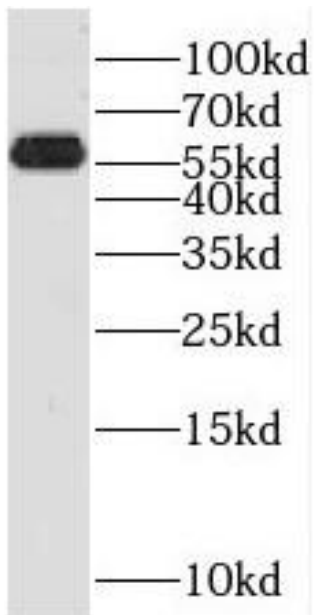
Fax: (0086)027-87800889 www.fn-test.com



Immunohistochemistry of paraffin-embedded human liver cancer using FNab06836(PRUNE antibody) at dilution of 1:100



IP Result of anti-PRUNE (IP:FNab06836, 3ug; Detection:FNab06836 1:500) with HepG2 cells lysate 1720ug.



HepG2 cells were subjected to SDS PAGE followed by western blot with FNab06836(PRUNE antibody) at dilution of 1:600