

anti- PPP1R10 antibody

Product Information

Catalog No.:	FNab06698
Size:	100µg
Form:	liquid
Purification:	Immunogen affinity purified
Purity:	≥95% as determined by SDS-PAGE
Host:	Rabbit
Clonality:	polyclonal
Clone ID:	None
IsoType:	IgG
Storage:	PBS with 0.02% sodium azide and 50% glycerol pH 7.3, -20°C for 12 months (Avoid repeated freeze / thaw cycles.)

Background

Scaffold protein which mediates the formation of the PTW/PP1 phosphatase complex by providing a binding platform to each component of the complex. The PTW/PP1 phosphatase complex plays a role in the control of chromatin structure and cell cycle progression during the transition from mitosis into interphase. Mediates interaction of WDR82 and PPP1CA. Inhibitor of PPP1CA and PPP1CC phosphatase activities. Has inhibitory activity on PPP1CA only when phosphorylated. Binds to mRNA, single-stranded DNA(ssDNA), poly(A) and poly(G) homopolymers(By similarity).

Immunogen information

Immunogen:	protein phosphatase 1, regulatory(inhibitor) subunit 10
Synonyms:	CAT53, FB19, PNUTS
Observed MW:	99 kDa
UniprotID :	Q96QC0

Application

Reactivity:	Human
-------------	-------

Wuhan Fine Biotech Co., Ltd.

B9 Bld, High-Tech Medical Devices Park, No. 818 GaoxinAve. East Lake High-Tech Development Zone. Wuhan, Hubei, China(430206)

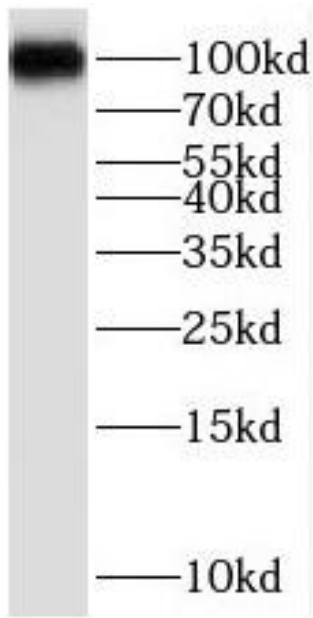
Tel : (0086)027-87384275

Fax: (0086)027-87800889 www.fn-test.com

Tested Application: ELISA, WB

Recommended dilution: WB: 1:500-1:2000

Image:



HepG2 cells were subjected to SDS PAGE followed by western blot with FNab06698(PPP1R10 Antibody) at dilution of 1:300

Wuhan Fine Biotech Co., Ltd.

B9 Bld, High-Tech Medical Devices Park, No. 818 GaoxinAve. East Lake High-Tech Development Zone. Wuhan, Hubei, China(430206)

Tel : (0086)027-87384275

Fax: (0086)027-87800889 www.fn-test.com