

anti- POLR2J antibody

Product Information

Catalog No.:	FNab06626
Size:	100µg
Form:	liquid
Purification:	Immunogen affinity purified
Purity:	≥95% as determined by SDS-PAGE
Host:	Rabbit
Clonality:	polyclonal
Clone ID:	None
IsoType:	IgG
Storage:	PBS with 0.02% sodium azide and 50% glycerol pH 7.3, -20°C for 12 months (Avoid repeated freeze / thaw cycles.)

Background

DNA-dependent RNA polymerase catalyzes the transcription of DNA into RNA using the four ribonucleoside triphosphates as substrates. Component of RNA polymerase II which synthesizes mRNA precursors and many functional non-coding RNAs. Pol II is the central component of the basal RNA polymerase II transcription machinery. It is composed of mobile elements that move relative to each other. RPB11 is part of the core element with the central large cleft(By similarity).

Immunogen information

Immunogen:	polymerase(RNA) II(DNA directed) polypeptide J, 13.3kDa
Synonyms:	hRPB14, POLR2J, POLR2J1, RPB11, RPB11A, RPB11m
Observed MW:	13 kDa
UniprotID :	P52435

Application

Reactivity:	Human, Mouse, Rat
Tested Application:	ELISA, WB, IHC

Wuhan Fine Biotech Co., Ltd.

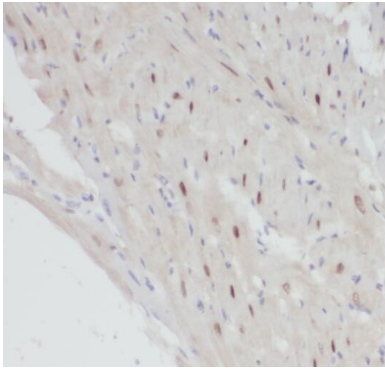
B9 Bld, High-Tech Medical Devices Park, No. 818 GaoxinAve.East Lake High-Tech Development Zone.Wuhan, Hubei, China(430206)

Tel : (0086)027-87384275

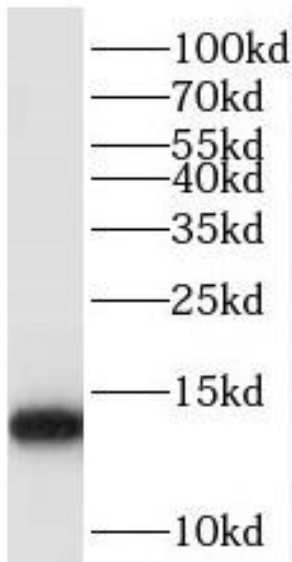
Fax: (0086)027-87800889 www.fn-test.com

Recommended dilution: WB: 1:200-1:2000; IHC: 1:20-1:200; IF: 1:50-1:500

Image:



Immunohistochemistry of paraffin-embedded human heart using FNab06626(POLR2J antibody) at dilution of 1:100



A549 cells were subjected to SDS PAGE followed by western blot with FNab06626(POLR2J antibody) at dilution of 1:800

Wuhan Fine Biotech Co., Ltd.

B9 Bld, High-Tech Medical Devices Park, No. 818 GaoxinAve. East Lake High-Tech Development Zone. Wuhan, Hubei, China(430206)

Tel : (0086)027-87384275

Fax: (0086)027-87800889 www.fn-test.com