

## anti- PLD1 antibody

### Product Information

Catalog No.:	FNab06530
Size:	100µg
Form:	liquid
Purification:	Immunogen affinity purified
Purity:	≥95% as determined by SDS-PAGE
Host:	Rabbit
Clonality:	polyclonal
Clone ID:	None
IsoType:	IgG
Storage:	PBS with 0.02% sodium azide and 50% glycerol pH 7.3, -20°C for 12 months (Avoid repeated freeze / thaw cycles.)

### Background

Implicated as a critical step in numerous cellular pathways, including signal transduction, membrane trafficking, and the regulation of mitosis. May be involved in the regulation of perinuclear intravesicular membrane traffic(By similarity).

### Immunogen information

Immunogen:	phospholipase D1, phosphatidylcholine-specific
Synonyms:	None
Observed MW:	80 kDa
UniprotID :	Q13393

### Application

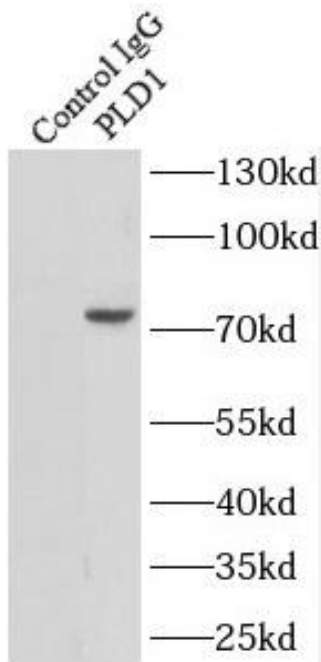
Reactivity:	Human, Mouse, Rat
Tested Application:	ELISA, WB, IF, IP
Recommended dilution:	WB: 1:500-1:2000; IP: 1:200-1:1000; IF: 1:20-1:200
Image:	

### Wuhan Fine Biotech Co., Ltd.

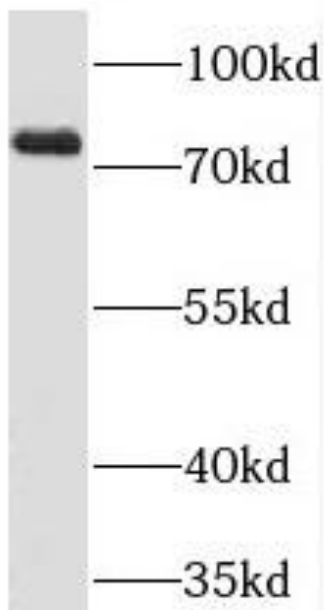
B9 Bld, High-Tech Medical Devices Park, No. 818 GaoxinAve.East Lake High-Tech Development Zone.Wuhan, Hubei, China(430206)

Tel :( 0086)027-87384275

Fax: (0086)027-87800889 [www.fn-test.com](http://www.fn-test.com)



IP Result of anti-PRKCSH (IP:FNab06530, 4ug;  
Detection:FNab06530 1:1000) with HeLa cells  
lysate 2000ug.



A431 cells were subjected to SDS PAGE followed  
by western blot with FNab06530 (PRKCSH  
antibody) at dilution of 1:4000