

anti- PLA2G4B antibody

Product Information

Catalog No.:	FNab06504
Size:	100µg
Form:	liquid
Purification:	Immunogen affinity purified
Purity:	≥95% as determined by SDS-PAGE
Host:	Rabbit
Clonality:	polyclonal
Clone ID:	None
IsoType:	IgG
Storage:	PBS with 0.02% sodium azide and 50% glycerol pH 7.3, -20°C for 12 months (Avoid repeated freeze / thaw cycles.)

Background

PLA2G4B, also named as cPLA2-beta, is a member of the cytosolic phospholipase A2 protein family. It is calcium-dependent phospholipase A2 that selectively hydrolyzes glycerophospholipids in the sn-2 position with a preference for arachidonoyl phospholipids. PLA2G4B has five isoforms with MW 88 kDa, 100 kDa, 55 kDa and 114 kDa.

Immunogen information

Immunogen:	phospholipase A2, group IVB(cytosolic)
Synonyms:	cPLA2 beta, HsT16992, Phospholipase A2 group IVB, PLA2G4B
Observed MW:	88 kDa
Uniprot ID :	POC869

Application

Reactivity:	Human
Tested Application:	ELISA, IHC, WB
Recommended dilution:WB:	1:200-1:1000; IHC: 1:20-1:200

Wuhan Fine Biotech Co., Ltd.

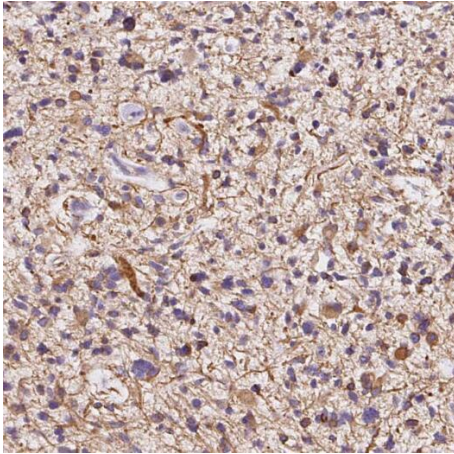
B9 Bld, High-Tech Medical Devices Park, No. 818 Gaoxin Ave. East Lake High-Tech Development Zone. Wuhan, Hubei, China(430206)

Tel : (0086)027-87384275

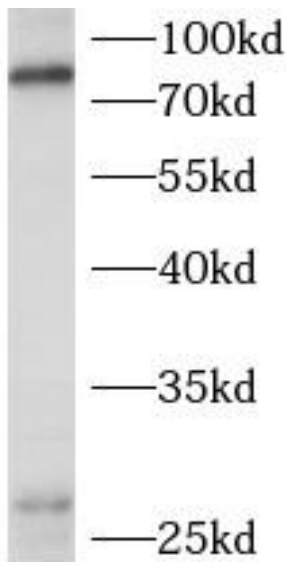
Fax: (0086)027-87800889

www.fn-test.com

Image:



Immunohistochemistry of paraffin-embedded human gliomas tissue slide using FNab06504(PLA2G4B Antibody) at dilution of 1:50



human plasma tissue were subjected to SDS PAGE followed by western blot with FNab06504(PLA2G4B Antibody) at dilution of 1:600

Wuhan Fine Biotech Co., Ltd.

B9 Bld, High-Tech Medical Devices Park, No. 818 Gaoxin Ave. East Lake High-Tech Development Zone. Wuhan, Hubei, China(430206)

Tel : (0086)027-87384275

Fax: (0086)027-87800889

www.fn-test.com