

## anti- PKC gamma antibody

### Product Information

Catalog No.:	FNab06485
Size:	100µg
Form:	liquid
Purification:	Immunogen affinity purified
Purity:	≥95% as determined by SDS-PAGE
Host:	Rabbit
Clonality:	polyclonal
Clone ID:	None
IsoType:	IgG
Storage:	PBS with 0.02% sodium azide and 50% glycerol pH 7.3, -20°C for 12 months (Avoid repeated freeze / thaw cycles.)

### Background

Protein kinase C(PKC) is a family of serine-and threonine-specific protein kinases that can be activated by calcium and second messenger diacylglycerol. PKC family members phosphorylate a wide variety of protein targets and are known to be involved in diverse cellular signaling pathways. PKC gamma is a neuron-specific member of the classical PKCs and is activated and translocated to subcellular regions as a result of various stimuli, including diacylglycerol synthesis, increased intracellular Ca(2+) and phorbol esters. Defects in this protein have been associated with spinocerebellar ataxia type 14(SCA14), an autosomal dominant neurodegenerative disease.

### Immunogen information

Immunogen:	protein kinase C, gamma
Synonyms:	PKC gamma, PKCC, PKCG, PRKCG, Protein kinase C gamma type, protein kinase C, gamma, SCA14
Observed MW:	78 kDa
UniprotID :	P05129

### Application

1

### Wuhan Fine Biotech Co., Ltd.

B9 Bld, High-Tech Medical Devices Park, No. 818 GaoxinAve. East Lake High-Tech Development Zone. Wuhan, Hubei, China(430206)

Tel : (0086)027-87384275

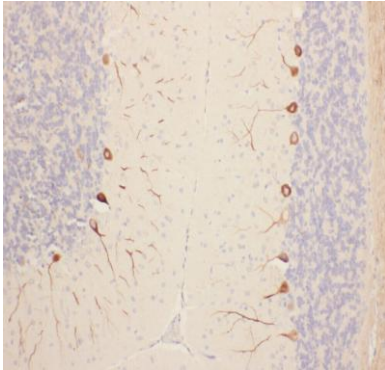
Fax: (0086)027-87800889 [www.fn-test.com](http://www.fn-test.com)

Reactivity: Human, Mouse, Rat

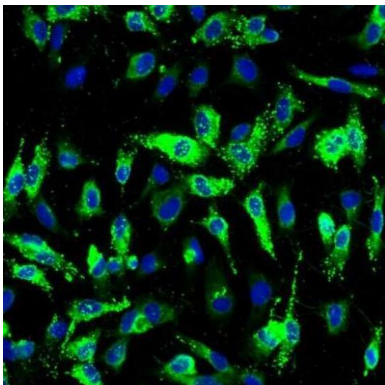
Tested Application: ELISA, WB, IHC, FC, IP

Recommended dilution: WB: 1:500-1:5000; IP: 1:200-1:2000; IHC: 1:20-1:200; IF: 1:50-1:500

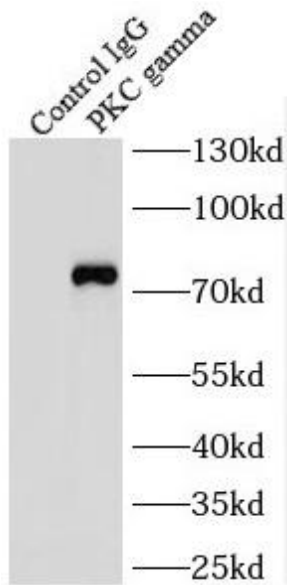
Image:



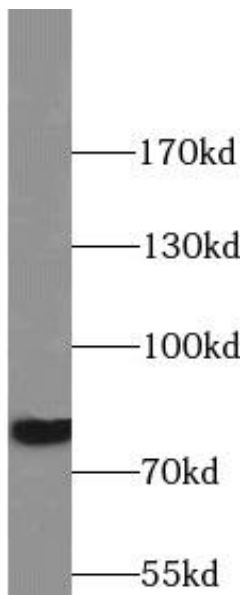
Immunohistochemistry of paraffin-embedded human cerebellum tissue slide using FNab06485 (PRKCG Antibody) at dilution of 1:200



Immunofluorescent analysis of ( -20°C Ethanol ) fixed HeLa cells using FNab06485 ( PRKCG Antibody) at dilution of 1:50 and Alexa Fluor 488-conjugated AffiniPure Goat Anti-Rabbit IgG(H+L)



IP Result of anti-PKC gamma (IP:FNab06485, 4ug; Detection:FNab06485 1:500) with mouse brain tissue lysate 2640ug.



human brain tissue were subjected to SDS PAGE followed by western blot with FNab06485(PRKCG antibody) at dilution of 1:1000