

anti- PIN1 antibody

Product Information

Catalog No.:	FNab06457
Size:	100µg
Form:	liquid
Purification:	Immunogen affinity purified
Purity:	≥95% as determined by SDS-PAGE
Host:	Rabbit
Clonality:	polyclonal
Clone ID:	None
IsoType:	IgG
Storage:	PBS with 0.02% sodium azide and 50% glycerol pH 7.3, -20°C for 12 months (Avoid repeated freeze / thaw cycles.)

Background

Peptidyl-prolyl cis/trans isomerase(PPIase) that binds to and isomerizes specific phosphorylated Ser/Thr-Pro(pSer/Thr-Pro) motifs in a subset of proteins, resulting in conformational changes in the proteins(PubMed:21497122, PubMed:22033920). Displays a preference for an acidic residue N-terminal to the isomerized proline bond. Regulates mitosis presumably by interacting with NIMA and attenuating its mitosis-promoting activity. Down-regulates kinase activity of BTK(PubMed:16644721). Can transactivate multiple oncogenes and induce centrosome amplification, chromosome instability and cell transformation. Required for the efficient dephosphorylation and recycling of RAF1 after mitogen activation(PubMed:15664191). Binds and targets PML and BCL6 for degradation in a phosphorylation-dependent manner(PubMed:17828269). Acts as a regulator of JNK cascade by binding to phosphorylated FBXW7, disrupting FBXW7 dimerization and promoting FBXW7 autoubiquitination and degradation: degradation of FBXW7 leads to subsequent stabilization of JUN(PubMed:22608923).

Immunogen information

Immunogen:	peptidylprolyl cis/trans isomerase, NIMA-interacting 1
Synonyms:	None
Observed MW:	18 kDa

Wuhan Fine Biotech Co., Ltd.

B9 Bld, High-Tech Medical Devices Park, No. 818 Gaoxin Ave. East Lake High-Tech Development Zone. Wuhan, Hubei, China(430206)

Tel : (0086)027-87384275

Fax: (0086)027-87800889

www.fn-test.com

Uniprot ID : Q13526

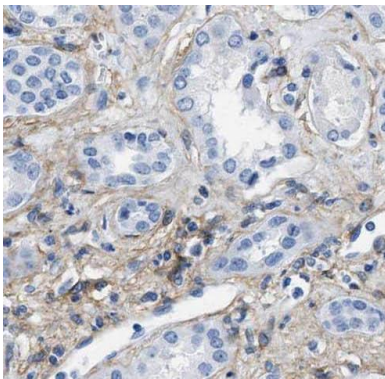
Application

Reactivity: Human, Mouse, Rat

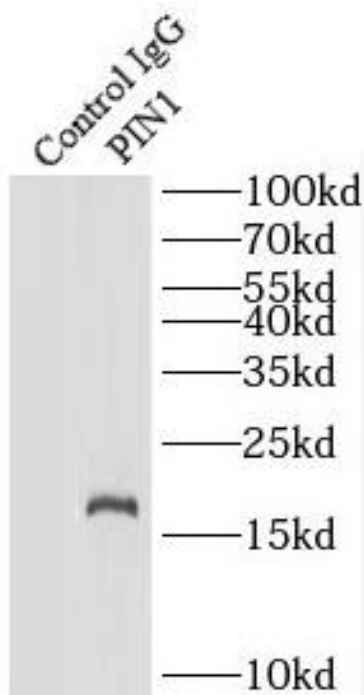
Tested Application: ELISA, WB, IHC, IP

Recommended dilution: WB: 1:500-1:2000; IP: 1:200-1:1000; IHC: 1:20-1:200

Image:



Immunohistochemistry of paraffin-embedded human renal cell carcinoma tissue slide using FNab06457(PIN1 Antibody) at dilution of 1:50



IP Result of anti-PIN1 (IP:FNab06457, 4ug; Detection:FNab06457 1:500) with HepG2 cells lysate 2400ug.

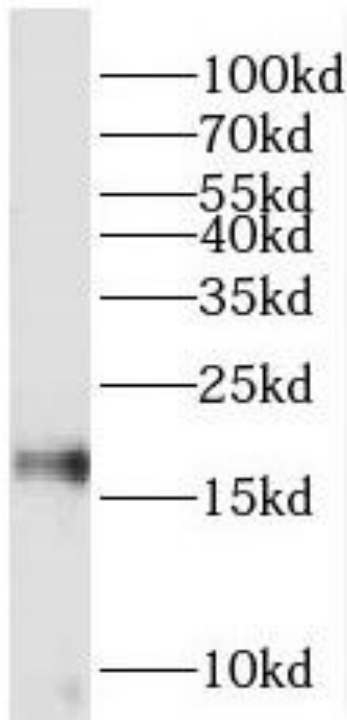
Wuhan Fine Biotech Co., Ltd.

B9 Bld, High-Tech Medical Devices Park, No. 818 Gaoxin Ave. East Lake High-Tech Development Zone. Wuhan, Hubei, China(430206)

Tel : (0086)027-87384275

Fax: (0086)027-87800889

www.fn-test.com



HEK-293 cells were subjected to SDS PAGE followed by western blot with FNab06457(PIN1 antibody) at dilution of 1:1000