

anti- phospho-TDP43(409/410) antibody

Product Information

Catalog No.:	FNab06401
Size:	100µg
Form:	liquid
Purification:	Immunogen affinity purified
Purity:	≥95% as determined by SDS-PAGE
Host:	Rabbit
Clonality:	polyclonal
Clone ID:	None
IsoType:	IgG
Storage:	PBS with 0.02% sodium azide and 50% glycerol pH 7.3, -20°C for 12 months (Avoid repeated freeze / thaw cycles.)

Background

TDP-43 is a 414 amino acid (aa) nuclear DNA and RNA-binding protein which regulates transcription and splicing. TDP-43 is aberrantly expressed in most forms of amyotrophic lateral sclerosis and frontotemporal lobar degeneration. In these cases it is absent from the nucleus and accumulates, along with a truncated 25kDa form, in ubiquitin-containing inclusion bodies. In pathological tissues, TDP-43 is highly phosphorylated and Ser409/410 is the main phosphorylation site. Among the TDP-43 protein fragments, the 25kDa fragment is also highly phosphorylated and widely believed to be pathogenic. This antibody is a rabbit polyclonal antibody recognizing TDP-43 only when phosphorylated at 409/410. This antibody detects phosphorylated forms of TDP-43 as well as the cleavage product of 25 kDa.

Immunogen information

Immunogen:	TAR DNA binding protein
Synonyms:	phospho TDP43, phospho(409/410)-TDP43, TARDBP, TDP43
Observed MW:	48 kDa
Uniprot ID :	Q13148

Application

Reactivity:	Human, Mouse
-------------	--------------

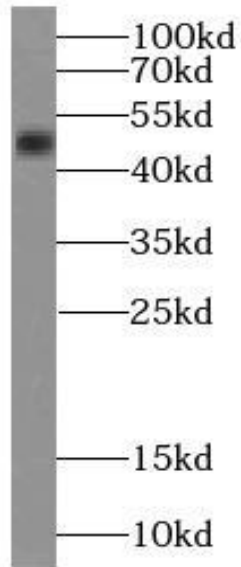
Wuhan Fine Biotech Co., Ltd.

B9 Bld, High-Tech Medical Devices Park, No. 818 Gaoxin Ave. East Lake High-Tech Development Zone. Wuhan, Hubei, China(430206)

Tested Application: ELISA, WB

Recommended dilution: WB: 1:500-1:2000

Image:



human placenta tissue were subjected to SDS PAGE followed by western blot with FNab06401(phospho(409/410)-TDP43 antibody) at dilution of 1:1000

Wuhan Fine Biotech Co., Ltd.

B9 Bld, High-Tech Medical Devices Park, No. 818 Gaoxin Ave. East Lake High-Tech Development Zone. Wuhan, Hubei, China(430206)

Tel : (0086)027-87384275

Fax: (0086)027-87800889

www.fn-test.com