

anti- PHIP antibody

Product Information

Catalog No.:	FNab06390
Size:	100µg
Form:	liquid
Purification:	Immunogen affinity purified
Purity:	≥95% as determined by SDS-PAGE
Host:	Rabbit
Clonality:	polyclonal
Clone ID:	None
IsoType:	IgG
Storage:	PBS with 0.02% sodium azide and 50% glycerol pH 7.3, -20°C for 12 months (Avoid repeated freeze / thaw cycles.)

Background

This gene encodes a protein that binds to the insulin receptor substrate 1 protein and regulates glucose transporter translocation in skeletal muscle cells. The encoded protein may also regulate growth and survival of pancreatic beta cells. Elevated copy number of this gene may be associated with melanoma severity and the encoded protein may promote melanoma metastasis in human patients.

Immunogen information

Immunogen:	pleckstrin homology domain interacting protein
Synonyms:	WDR11
Observed MW:	250 kDa
Uniprot ID :	Q8WWQ0

Application

Reactivity:	Human, Mouse
Tested Application:	ELISA, WB, IHC
Recommended dilution:	WB: 1:500 - 1:2000; IHC: 1:50 - 1:200

Wuhan Fine Biotech Co., Ltd.

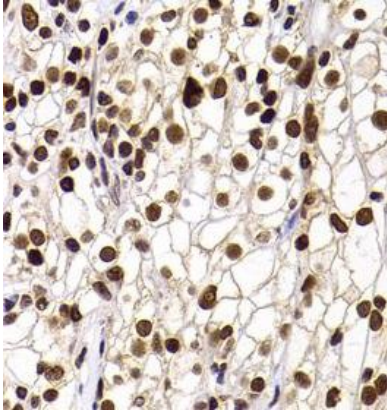
B9 Bld, High-Tech Medical Devices Park, No. 818 Gaoxin Ave. East Lake High-Tech Development Zone. Wuhan, Hubei, China(430206)

Tel : (0086)027-87384275

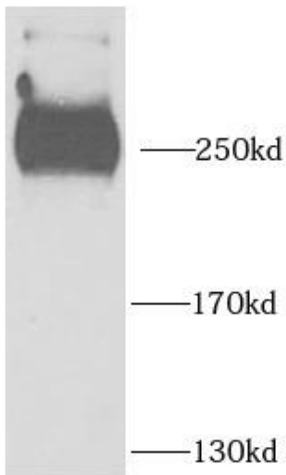
Fax: (0086)027-87800889

www.fn-test.com

Image:



Immunohistochemistry of paraffin-embedded human kidney cancer using FNab06390(PHIP antibody) at dilution of 1:100



HeLa cells were subjected to SDS PAGE followed by western blot with FNab06390(PHIP antibody) at dilution of 1:1000

Wuhan Fine Biotech Co., Ltd.

B9 Bld, High-Tech Medical Devices Park, No. 818 Gaoxin Ave. East Lake High-Tech Development Zone. Wuhan, Hubei, China(430206)

Tel : (0086)027-87384275

Fax: (0086)027-87800889

www.fn-test.com