

anti- PHACTR4 antibody

Product Information

Catalog No.:	FNab06371
Size:	100µg
Form:	liquid
Purification:	Immunogen affinity purified
Purity:	≥95% as determined by SDS-PAGE
Host:	Rabbit
Clonality:	polyclonal
Clone ID:	None
IsoType:	IgG
Storage:	PBS with 0.02% sodium azide and 50% glycerol pH 7.3, -20°C for 12 months (Avoid repeated freeze / thaw cycles.)

Background

Regulator of protein phosphatase 1(PP1) required for neural tube and optic fissure closure, and enteric neural crest cell(ENCCs) migration during development. Acts as an activator of PP1 by interacting with PPP1CA and preventing phosphorylation of PPP1CA at 'Thr-320'. During neural tube closure, localizes to the ventral neural tube and activates PP1, leading to down-regulate cell proliferation within cranial neural tissue and the neural retina. Also acts as a regulator of migration of enteric neural crest cells(ENCCs) by activating PP1, leading to dephosphorylation and subsequent activation of cofilin(COF1 or COF2) and repression of the integrin signaling through the RHO/ROCK pathway(By similarity).

Immunogen information

Immunogen:	phosphatase and actin regulator 4
Synonyms:	None
Observed MW:	71-85 kDa
UniprotID :	Q8IZ21

Application

Wuhan Fine Biotech Co., Ltd.

B9 Bld, High-Tech Medical Devices Park, No. 818 GaoxinAve.East Lake High-Tech Development Zone.Wuhan, Hubei, China(430206)

Tel : (0086)027-87384275

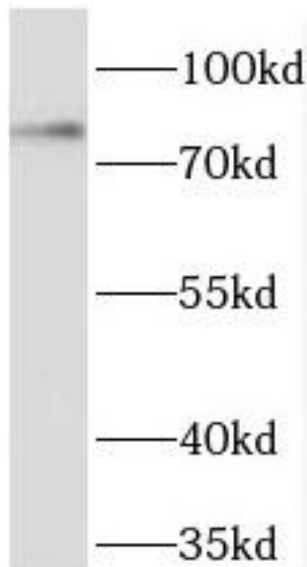
Fax: (0086)027-87800889 www.fn-test.com

Reactivity: Human, Mouse, Rat

Tested Application: ELISA, WB, IF

Recommended dilution: WB: 1:500-1:2000; IF: 1:20-1:200

Image:



mouse eye tissue were subjected to SDS PAGE followed by western blot with FNab06371(PHACTR4 antibody) at dilution of 1:400

Wuhan Fine Biotech Co., Ltd.

B9 Bld, High-Tech Medical Devices Park, No. 818 GaoxinAve. East Lake High-Tech Development Zone. Wuhan, Hubei, China(430206)

Tel : (0086)027-87384275

Fax: (0086)027-87800889 www.fn-test.com