

anti- PGM2L1 antibody

Product Information

Catalog No.:	FNab06362
Size:	100µg
Form:	liquid
Purification:	Immunogen affinity purified
Purity:	≥95% as determined by SDS-PAGE
Host:	Rabbit
Clonality:	polyclonal
Clone ID:	None
IsoType:	IgG
Storage:	PBS with 0.02% sodium azide and 50% glycerol pH 7.3, -20°C for 12 months (Avoid repeated freeze / thaw cycles.)

Background

Glucose 1,6-bisphosphate synthase using 1,3-bisphosphoglycerate as a phosphate donor and a series of 1-phosphate sugars as acceptors, including glucose 1-phosphate, mannose 1-phosphate, ribose 1-phosphate and deoxyribose 1-phosphate. 5 or 6-phosphosugars are bad substrates, with the exception of glucose 6-phosphate. Also synthesizes ribose 1,5-bisphosphate. Has only low phosphopentomutase and phosphoglucomutase activities.

Immunogen information

Immunogen:	phosphoglucomutase 2-like 1
Synonyms:	BM32A
Observed MW:	72 kDa
UniprotID :	Q6PCE3

Application

Reactivity:	Human, Mouse, Rat
Tested Application:	ELISA, WB, IHC
Recommended dilution:	WB: 1:500-1:2000; IHC: 1:20-1:200

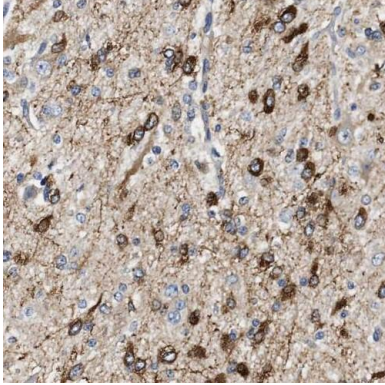
Wuhan Fine Biotech Co., Ltd.

B9 Bld, High-Tech Medical Devices Park, No. 818 GaoxinAve. East Lake High-Tech Development Zone. Wuhan, Hubei, China(430206)

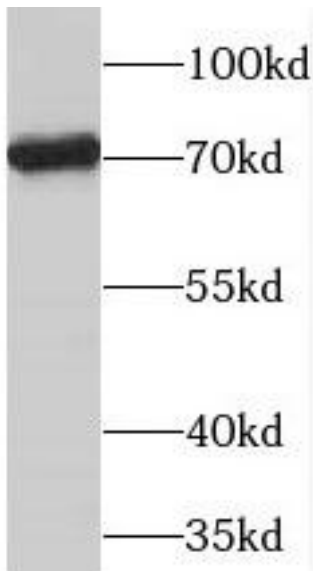
Tel : (0086)027-87384275

Fax: (0086)027-87800889 www.fn-test.com

Image:



Immunohistochemistry of paraffin-embedded human gliomas using FNab06362(PGM2L1 antibody) at dilution of 1:50



mouse skeletal muscle tissue were subjected to SDS PAGE followed by western blot with FNab06362(PGM2L1 antibody) at dilution of 1:800

Wuhan Fine Biotech Co., Ltd.

B9 Bld, High-Tech Medical Devices Park, No. 818 GaoxinAve. East Lake High-Tech Development Zone. Wuhan, Hubei, China(430206)

Tel : (0086)027-87384275

Fax: (0086)027-87800889 www.fn-test.com