

## anti-Parkin antibody

### Product Information

|               |   |
|---------------|---|
| Catalog No.:  | FNab06149   |
| Size:         | 100µg   |
| Form:         | liquid  |
| Purification: | Immunogen affinity purified   |
| Purity:       | ≥95% as determined by SDS-PAGE  |
| Host:         | Rabbit  |
| Clonality:    | polyclonal  |
| Clone ID:     | None  |
| IsoType:      | IgG   |
| Storage:      | PBS with 0.02% sodium azide and 50% glycerol pH 7.3, -20°C for 12 months (Avoid repeated freeze / thaw cycles.) |

### Background

None

### Immunogen information

|              |   |
|--------------|---|
| Immunogen:   | Parkinson disease(autosomal recessive, juvenile) 2, parkin          |
| Synonyms:    | AR JP, LPRS2, PARK2, Parkin, Parkinson disease protein 2, PDJ, PRKN |
| Observed MW: | 52kDa   |
| UniprotID :  | O60260  |

### Application

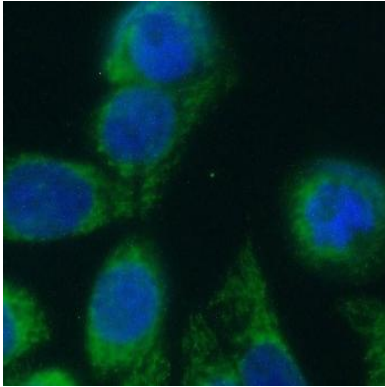
|                       |                                      |
|-----------------------|--------------------------------------|
| Reactivity:           | Human, Mouse, Rat                    |
| Tested Application:   | ELISA, WB, IF                        |
| Recommended dilution: | WB: 1:500 - 1:2000; IF: 1:50 - 1:200 |
| Image:                |                                      |

### Wuhan Fine Biotech Co., Ltd.

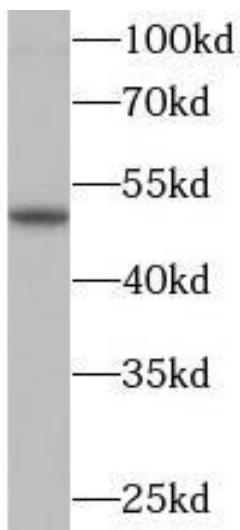
B9 Bld, High-Tech Medical Devices Park, No. 818 GaoxinAve. East Lake High-Tech Development Zone. Wuhan, Hubei, China(430206)

Tel : (0086)027-87384275

Fax: (0086)027-87800889 [www.fn-test.com](http://www.fn-test.com)



Immunofluorescent analysis of HeLa cells using FNab06149(Parkin antibody) at dilution of 1:50



PC12 cells were subjected to SDS PAGE followed by western blot with FNab06149(Parkin antibody) at dilution of 1:1000