
PANX1 antibody

Product Information

| | |
|---------------|---|
| Catalog No.: | FNab06137 |
| Size: | 100 μ g |
| Form: | liquid |
| Purification: | Immunogen affinity purified |
| Purity: | \geq 95% as determined by SDS-PAGE |
| Host: | Rabbit |
| IsoType: | IgG |
| Storage: | PBS with 0.02% sodium azide and 50% glycerol pH 7.3 , -20 °C for 12 months (Avoid repeated freeze / thaw cycles.) |

Background

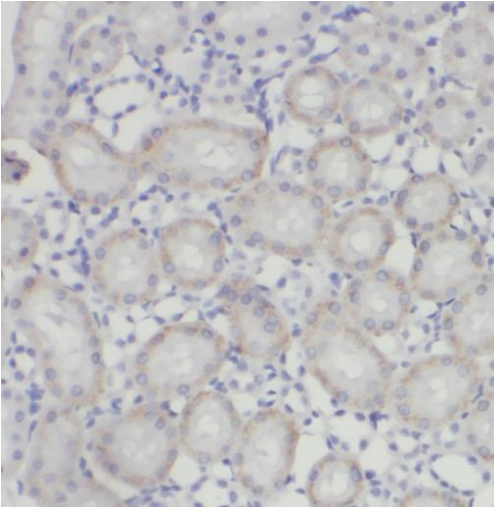
Structural component of the gap junctions and the hemichannels. May play a role as a Ca(2+)-leak channel to regulate ER Ca(2+) homeostasis.

Immunogen information

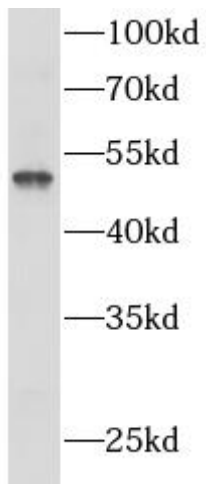
| | |
|----------------|---------------------------------------|
| Immunogen: | pannexin 1 |
| Synonyms: | MRS1, pannexin 1, PANX1, PX1, UNQ2529 |
| Calculated MW: | 48 kDa |
| Uniprot ID : | Q96RD7 |

Application

| | |
|-----------------------|-----------------------------------|
| Specificity: | Human, Mouse |
| Tested Application: | ELISA, IHC, WB |
| Recommended dilution: | WB: 1:500-1:2000; IHC: 1:20-1:200 |
| Image: | |



Immunohistochemistry of paraffin-embedded human kidney tissue slide using FNab06137(PANX1 Antibody) at dilution of 1:50



human brain tissue were subjected to SDS PAGE followed by western blot with FNab06137(PANX1 antibody) at dilution of 1:500