

anti- NUDT21 antibody

Product Information

Catalog No.:	FNab05904
Size:	100µg
Form:	liquid
Purification:	Immunogen affinity purified
Purity:	≥95% as determined by SDS-PAGE
Host:	Rabbit
Clonality:	polyclonal
Clone ID:	None
IsoType:	IgG
Storage:	PBS with 0.02% sodium azide and 50% glycerol pH 7.3, -20°C for 12 months (Avoid repeated freeze / thaw cycles.)

Background

Component of the cleavage factor Im(CFIm) complex that plays a key role in pre-mRNA 3'-processing. Involved in association with CPSF6 or CPSF7 in pre-mRNA 3'-end poly(A) site cleavage and poly(A) addition. NUDT21/CPSF5 binds to cleavage and polyadenylation RNA substrates. The homodimer mediates simultaneous sequence-specific recognition of two 5'-UGUA-3' elements within the pre-mRNA. Binds to, but does not hydrolyze mono- and di-adenosine nucleotides. May have a role in mRNA export.

Immunogen information

Immunogen:	nudix(nucleoside diphosphate linked moiety X)-type motif 21
Synonyms:	CFIM25, CPSF25, CPSF5
Observed MW:	26 kDa
Uniprot ID :	O43809

Application

Reactivity:	Human, Mouse, Rat
Tested Application:	ELISA, WB, IHC, IF, IP

Wuhan Fine Biotech Co., Ltd.

B9 Bld, High-Tech Medical Devices Park, No. 818 Gaoxin Ave. East Lake High-Tech Development Zone. Wuhan, Hubei, China(430206)

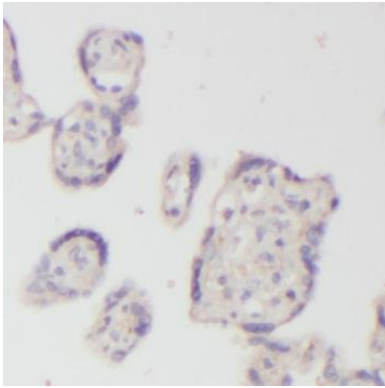
Tel : (0086)027-87384275

Fax: (0086)027-87800889

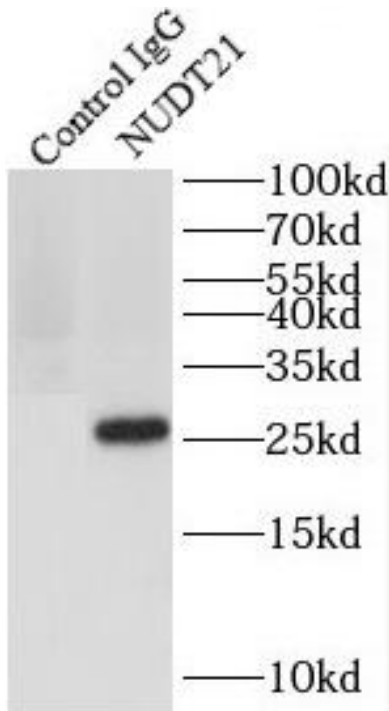
www.fn-test.com

Recommended dilution: WB: 1:500-1:2000; IP: 1:200-1:1000; IHC: 1:20-1:200; IF: 1:20-1:200

Image:



Immunohistochemistry of paraffin-embedded human placenta using FNab05904(NUDT21 antibody) at dilution of 1:50



IP Result of anti-NUDT21 (IP:FNab05904, 3ug; Detection:FNab05904 1:500) with HeLa cells lysate 3000ug.

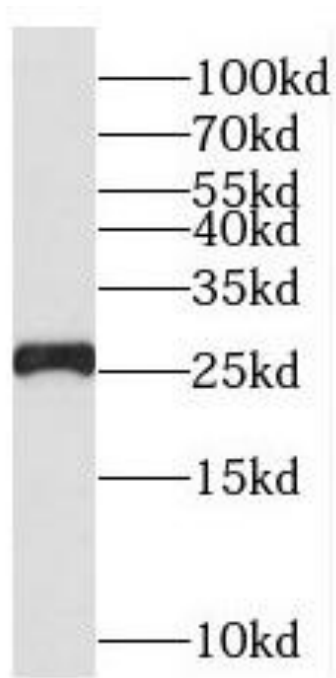
Wuhan Fine Biotech Co., Ltd.

B9 Bld, High-Tech Medical Devices Park, No. 818 Gaoxin Ave. East Lake High-Tech Development Zone. Wuhan, Hubei, China(430206)

Tel : (0086)027-87384275

Fax: (0086)027-87800889

www.fn-test.com



human brain tissue were subjected to SDS PAGE followed by western blot with FNab05904(NUDT21 antibody) at dilution of 1:500