

## anti- NPHP5,IQCB1 antibody

### Product Information

Catalog No.:	FNab05818
Size:	100µg
Form:	liquid
Purification:	Immunogen affinity purified
Purity:	≥95% as determined by SDS-PAGE
Host:	Rabbit
Clonality:	polyclonal
Clone ID:	None
IsoType:	IgG
Storage:	PBS with 0.02% sodium azide and 50% glycerol pH 7.3, -20°C for 12 months (Avoid repeated freeze / thaw cycles.)

### Background

IQCB1, also known as NPHP5, is a nephrocystin protein that interacts with calmodulin and the retinitis pigmentosa GTPase regulator protein. It has a central coiled-coil region and two calmodulin-binding IQ domains. Localized to the primary cilia of renal epithelial cells and connecting cilia of photoreceptor cells, IQCB1 is thought to play a role in ciliary function. Mutations in this gene result in Senior-Loken syndrome type 5, a juvenile disorder characterized by defects in the waste filtering system of the kidney, as well as retinal degradation.

### Immunogen information

Immunogen:	IQ motif containing B1
Synonyms:	IQ motif containing B1, IQCB1, KIAA0036, Nephrocystin 5, NPHP5, PIQ, SLSN5
Observed MW:	None
Uniprot ID :	Q15051

### Application

Reactivity:	Human, Mouse, Rat
-------------	-------------------

### Wuhan Fine Biotech Co., Ltd.

B9 Bld, High-Tech Medical Devices Park, No. 818 Gaoxin Ave. East Lake High-Tech Development Zone. Wuhan, Hubei, China(430206)

Tel : (0086)027-87384275

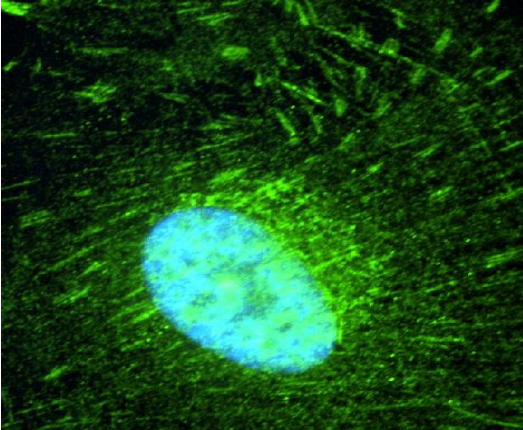
Fax: (0086)027-87800889

[www.fn-test.com](http://www.fn-test.com)

Tested Application: ELISA, IF

Recommended dilution:IF: 1:10-1:100

Image:



IF Result of anti-NPHP5 (FNab05818,1:50) show 'focal adhesion-like' structures in human hTERT-RPE1 cells. 1% PFA fixation.