

## anti- MRM1 antibody

### Product Information

Catalog No.:	FNab05309
Size:	100µg
Form:	liquid
Purification:	Immunogen affinity purified
Purity:	≥95% as determined by SDS-PAGE
Host:	Rabbit
Clonality:	polyclonal
Clone ID:	None
IsoType:	IgG
Storage:	PBS with 0.02% sodium azide and 50% glycerol pH 7.3, -20°C for 12 months (Avoid repeated freeze / thaw cycles.)

### Background

S-adenosyl-L-methionine-dependent 2'-O-ribose methyltransferase that catalyzes the formation of 2'-O-methylguanosine at position 1145(Gm1145) in the 16S mitochondrial large subunit ribosomal RNA(mtLSUrRNA), a universally conserved modification in the peptidyltransferase domain of the mtLSUrRNA.

### Immunogen information

Immunogen:	mitochondrial rRNAmethyltransferase 1 homolog( <i>S. cerevisiae</i> )
Synonyms:	None
Observed MW:	39 kDa
UniprotID :	Q6IN84

### Application

Reactivity:	Human, Mouse, Rat
Tested Application:	ELISA, WB
Recommended dilution:WB:	1:500-1:2000

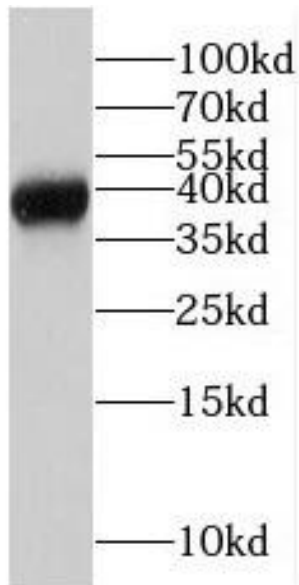
### Wuhan Fine Biotech Co., Ltd.

B9 Bld, High-Tech Medical Devices Park, No. 818 GaoxinAve.East Lake High-Tech Development Zone.Wuhan, Hubei, China(430206)

Tel : (0086)027-87384275

Fax: (0086)027-87800889 [www.fn-test.com](http://www.fn-test.com)

Image:



MCF-7 cells were subjected to SDS PAGE followed by western blot with FNab05309( MRM1 Antibody) at dilution of 1:300

**Wuhan Fine Biotech Co., Ltd.**

B9 Bld, High-Tech Medical Devices Park, No. 818 GaoxinAve. East Lake High-Tech Development Zone. Wuhan, Hubei, China(430206)

Tel : (0086)027-87384275

Fax: (0086)027-87800889 [www.fn-test.com](http://www.fn-test.com)