

## anti- MPHOSPH6 antibody

### Product Information

Catalog No.:	FNab05282
Size:	100µg
Form:	liquid
Purification:	Immunogen affinity purified
Purity:	≥95% as determined by SDS-PAGE
Host:	Rabbit
Clonality:	polyclonal
Clone ID:	None
IsoType:	IgG
Storage:	PBS with 0.02% sodium azide and 50% glycerol pH 7.3, -20°C for 12 months (Avoid repeated freeze / thaw cycles.)

### Background

RNA-binding protein that associates with the RNA exosome complex. Involved in the 3'-processing of the 7S pre-RNA to the mature 5.8S rRNA and may play a role in recruiting the RNA exosome complex to pre-rRNA; this function may include C1D.

### Immunogen information

Immunogen:	M-phase phosphoprotein 6
Synonyms:	MPP6
Observed MW:	19kd
UniprotID :	Q99547

### Application

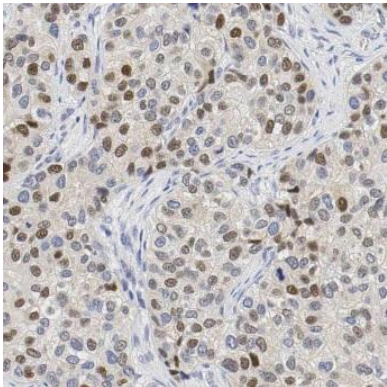
Reactivity:	Human, Mouse, Rat
Tested Application:	ELISA, WB, IHC
Recommended dilution:	WB: 1:500-1:2000; IHC: 1:20-1:200
Image:	

### Wuhan Fine Biotech Co., Ltd.

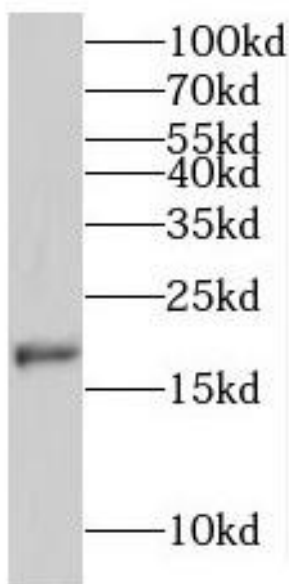
B9 Bld, High-Tech Medical Devices Park, No. 818 GaoxinAve. East Lake High-Tech Development Zone. Wuhan, Hubei, China(430206)

Tel : (0086)027-87384275

Fax: (0086)027-87800889 [www.fn-test.com](http://www.fn-test.com)



Immunohistochemistry of paraffin-embedded human breast cancer using FNab05282(MPHOSPH6 antibody) at dilution of 1:50



MCF7 cells were subjected to SDS PAGE followed by western blot with FNab05282(MPHOSPH6 antibody) at dilution of 1:300