

## anti- MEPCE antibody

### Product Information

Catalog No.:	FNab05126
Size:	100µg
Form:	liquid
Purification:	Immunogen affinity purified
Purity:	≥95% as determined by SDS-PAGE
Host:	Rabbit
Clonality:	polyclonal
Clone ID:	None
IsoType:	IgG
Storage:	PBS with 0.02% sodium azide and 50% glycerol pH 7.3, -20°C for 12 months (Avoid repeated freeze / thaw cycles.)

### Background

S-adenosyl-L-methionine-dependent methyltransferase that adds a methylphosphate cap at the 5'-end of 7SK snRNA, leading to stabilize it.

### Immunogen information

Immunogen:	methylphosphate capping enzyme
Synonyms:	BCDIN3
Observed MW:	74 kDa
UniprotID :	Q7L2J0

### Application

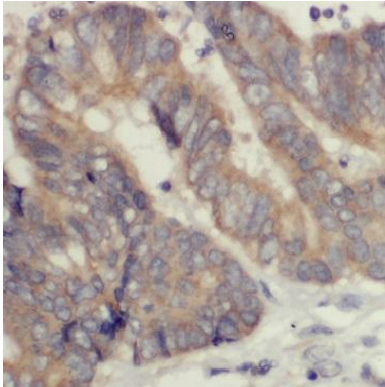
Reactivity:	Human, Mouse, Rat, Zebrafish
Tested Application:	ELISA, WB, IHC
Recommended dilution:	WB: 1:500-1:2000; IHC: 1:20-1:200
Image:	

### Wuhan Fine Biotech Co., Ltd.

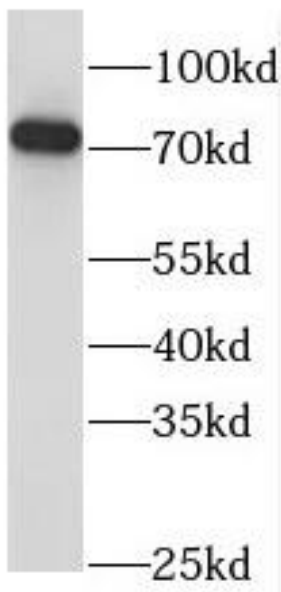
B9 Bld, High-Tech Medical Devices Park, No. 818 GaoxinAve. East Lake High-Tech Development Zone. Wuhan, Hubei, China(430206)

Tel : (0086)027-87384275

Fax: (0086)027-87800889 [www.fn-test.com](http://www.fn-test.com)



Immunohistochemistry of paraffin-embedded human colon cancer using FNab05126(MEPCE antibody) at dilution of 1:50



K-562 cells were subjected to SDS PAGE followed by western blot with FNab05126(MEPCE antibody) at dilution of 1:400