

## anti- MCL1 antibody

### Product Information

Catalog No.:	FNab05053
Size:	100µg
Form:	liquid
Purification:	Protein A+G purification
Purity:	≥95% as determined by SDS-PAGE
Host:	Mouse
Clonality:	monoclonal
Clone ID:	6F10
IsoType:	IgG2a
Storage:	PBS with 0.02% sodium azide and 50% glycerol pH 7.3, -20°C for 12 months (Avoid repeated freeze / thaw cycles.)

### Background

Involved in the regulation of apoptosis versus cell survival, and in the maintenance of viability but not of proliferation. Mediates its effects by interactions with a number of other regulators of apoptosis. Isoform 1 inhibits apoptosis. Isoform 2 promotes apoptosis.

### Immunogen information

Immunogen:	myeloid cell leukemia sequence 1(BCL2-related)
Synonyms:	BCL2L3
Observed MW:	37 kDa
UniprotID :	Q07820

### Application

Reactivity:	Human
Tested Application:	ELISA, WB, IF, IHC
Recommended dilution:	WB: 1:1000-1:10000; IHC: 1:200-1:500; IF: 1:10-1:100
Image:	

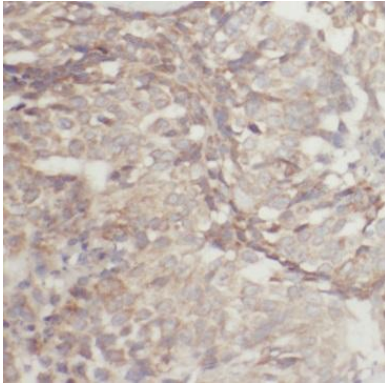
1

### Wuhan Fine Biotech Co., Ltd.

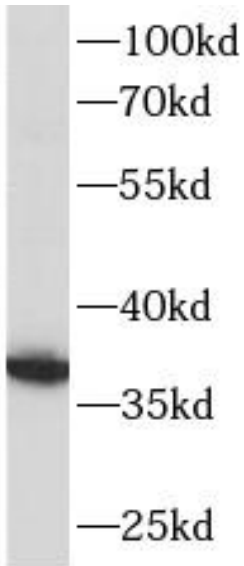
B9 Bld, High-Tech Medical Devices Park, No. 818 GaoxinAve. East Lake High-Tech Development Zone. Wuhan, Hubei, China(430206)

Tel : (0086)027-87384275

Fax: (0086)027-87800889 [www.fn-test.com](http://www.fn-test.com)



Immunohistochemistry of paraffin-embedded human breast cancer using FNab05053(MCL1 antibody) at dilution of 1:50



HeLa cells were subjected to SDS PAGE followed by western blot with FNab05053(MCL1 antibody) at dilution of 1:1000