

## anti- MCL1 antibody

### Product Information

Catalog No.:	FNab05052
Size:	100µg
Form:	liquid
Purification:	Immunogen affinity purified
Purity:	≥95% as determined by SDS-PAGE
Host:	Rabbit
Clonality:	polyclonal
Clone ID:	None
IsoType:	IgG
Storage:	PBS with 0.02% sodium azide and 50% glycerol pH 7.3, -20°C for 12 months (Avoid repeated freeze / thaw cycles.)

### Background

This gene encodes an anti- apoptotic protein, which is a member of the Bcl-2 family. Alternative splicing results in multiple transcript variants. The longest gene product (isoform 1) enhances cell survival by inhibiting apoptosis while the alternatively spliced shorter gene products (isoform 2 and isoform 3) promote apoptosis and are death-inducing.

### Immunogen information

Immunogen:	myeloid cell leukemia sequence 1 (BCL2-related)
Synonyms:	BCL2L3
Observed MW:	37 kDa
Uniprot ID :	Q07820

### Application

Reactivity:	Human, Mouse
Tested Application:	ELISA, WB, IHC
Recommended dilution:	WB: 1:500 - 1:2000; IHC: 1:100 - 1:200

### Wuhan Fine Biotech Co., Ltd.

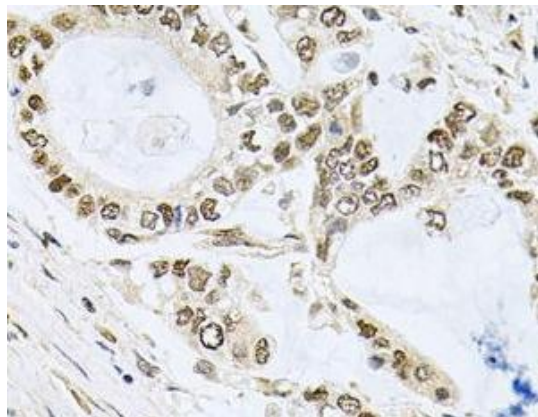
B9 Bld, High-Tech Medical Devices Park, No. 818 Gaoxin Ave. East Lake High-Tech Development Zone. Wuhan, Hubei, China(430206)

Tel : (0086)027-87384275

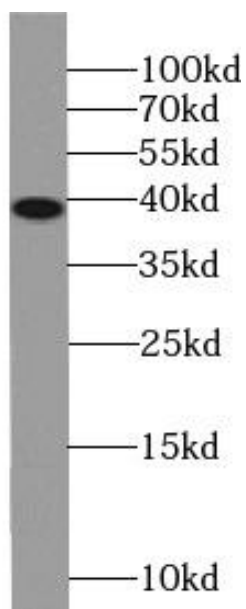
Fax: (0086)027-87800889

[www.fn-test.com](http://www.fn-test.com)

Image:



Immunohistochemistry of paraffin-embedded human lung cancer using FNab05052( MCL1 Antibody) at dilution of 1:100



Raji cells were subjected to SDS PAGE followed by western blot with FNab05052(MCL1 antibody) at dilution of 1:1000