

anti- Mast Cell Chymase antibody

Product Information

Catalog No.:	FNab05023
Size:	100µg
Form:	liquid
Purification:	Immunogen affinity purified
Purity:	≥95% as determined by SDS-PAGE
Host:	Rabbit
Clonality:	polyclonal
IsoType:	IgG
Storage:	PBS with 0.02% sodium azide and 50% glycerol pH 7.3 , -20°C for 24 months (Avoid repeated freeze / thaw cycles.)

Background

Mast Cell Chymase, also named as CYH, CYM and CMA1, belongs to the peptidase S1 family and Granzyme subfamily. It is the major secreted protease of mast cells with suspected roles in vasoactive peptide generation, extracellular matrix degradation, and regulation of gland secretion. CMA1 maybe a target for cardiovascular disease therapies.

Immunogen information

Immunogen:	chymase 1, mast cell
Synonyms:	Alpha chymase, chymase, chymase 1, mast cell, CMA1, CYH, CYM, Mast Cell Chymase, Mast cell protease I, Mcpt 5, Mcpt5, MCT1
Observed MW:	27-30 kDa
Uniprot ID :	P23946

Application

Reactivity:	Human, Mouse, Rat
Tested Application:	ELISA, WB, IP
Recommended dilution:	WB: 1:200-1:2000; IP: 1:200-1:1000
Image:	

1

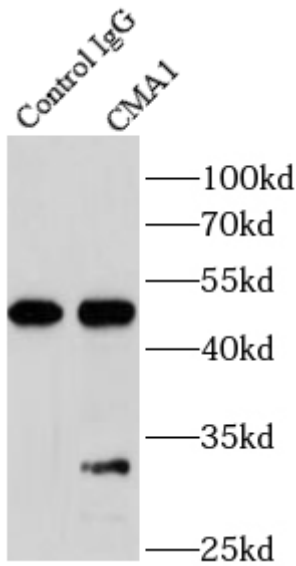
Wuhan Fine Biotech Co., Ltd.

B9 Bld, High-Tech Medical Devices Park, No. 818 Gaoxin Ave. East Lake High-Tech Development Zone. Wuhan, Hubei, China(430206)

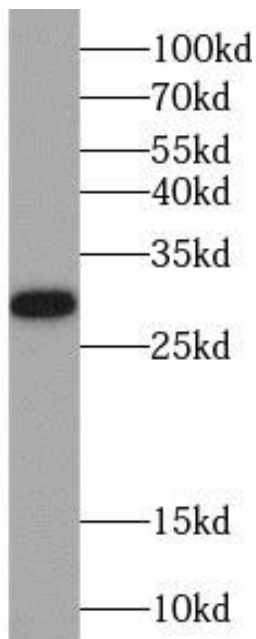
Tel : (0086)027-87384275

Fax: (0086)027-87800889

www.fn-test.com



IP Result of anti-CMA1 (IP: FNab05023, 4ug;
Detection: FNab05023 1:300) with mouse heart
tissue lysate 2400ug.



mouse heart tissue were subjected to SDS PAGE
followed by western blot with FNab05023(CMA1
antibody) at dilution of 1:500