

anti- MAP1B antibody

Product Information

Catalog No.:	FNab04974
Size:	100µg
Form:	liquid
Purification:	Immunogen affinity purified
Purity:	≥95% as determined by SDS-PAGE
Host:	Rabbit
Clonality:	polyclonal
Clone ID:	None
IsoType:	IgG
Storage:	PBS with 0.02% sodium azide and 50% glycerol pH 7.3, -20°C for 12 months (Avoid repeated freeze / thaw cycles.)

Background

Facilitates tyrosination of alpha-tubulin in neuronal microtubules(By similarity). Phosphorylated MAP1B may play a role in the cytoskeletal changes that accompany neurite extension. Possibly MAP1B binds to at least two tubulin subunits in the polymer, and this bridging of subunits might be involved in nucleating microtubule polymerization and in stabilizing microtubules. Acts as a positive cofactor in DAPK1-mediated autophagic vesicle formation and membrane blebbing.

Immunogen information

Immunogen:	microtubule-associated protein 1B
Synonyms:	MAP 1B, MAP1B, MAP5
Observed MW:	320kd
Uniprot ID :	P46821

Application

Reactivity:	Human, Mouse
Tested Application:	ELISA, WB, IHC, FC, IF
Recommended dilution:	WB: 1:200-1:2000; IHC: 1:20-1:200; IF: 1:10-1:100

Wuhan Fine Biotech Co., Ltd.

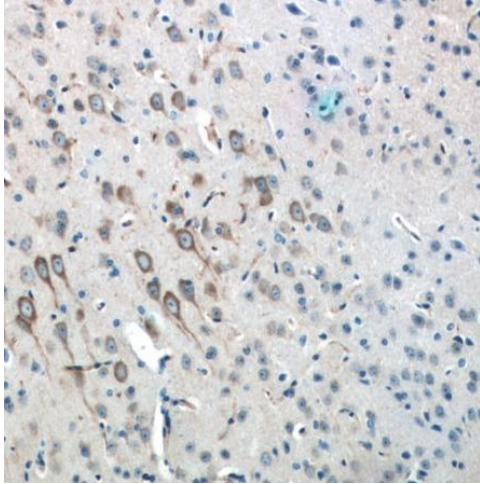
B9 Bld, High-Tech Medical Devices Park, No. 818 Gaoxin Ave. East Lake High-Tech Development Zone. Wuhan, Hubei, China(430206)

Tel : (0086)027-87384275

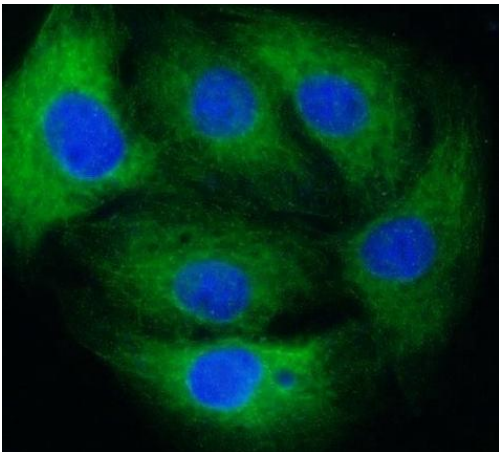
Fax: (0086)027-87800889

www.fn-test.com

Image:



Immunohistochemistry of paraffin-embedded mouse brain tissue slide using FNab04974(MAP1B Antibody) at dilution of 1:50



Immunofluorescent analysis of SH-SY5Y cells using FNab04974 (MAP1B Antibody) at dilution of 1:25 and Alexa Fluor 488-conjugated AffiniPure Goat Anti-Rabbit IgG(H+L)

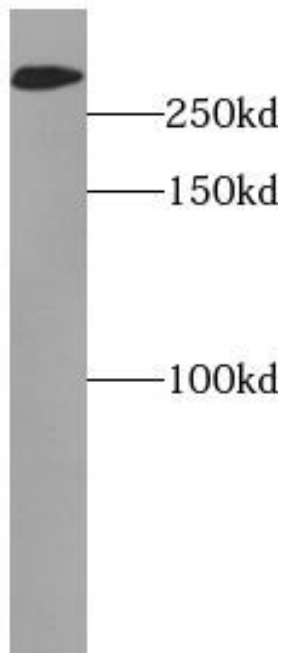
Wuhan Fine Biotech Co., Ltd.

B9 Bld, High-Tech Medical Devices Park, No. 818 Gaoxin Ave. East Lake High-Tech Development Zone. Wuhan, Hubei, China(430206)

Tel : (0086)027-87384275

Fax: (0086)027-87800889

www.fn-test.com



mouse cerebellum tissue were subjected to SDS PAGE followed by western blot with FNab04974(MAP1B antibody) at dilution of 1:500