

## anti- LYRM7 antibody

### Product Information

Catalog No.:	FNab04908
Size:	100µg
Form:	liquid
Purification:	Immunogen affinity purified
Purity:	≥95% as determined by SDS-PAGE
Host:	Rabbit
Clonality:	polyclonal
Clone ID:	None
IsoType:	IgG
Storage:	PBS with 0.02% sodium azide and 50% glycerol pH 7.3, -20°C for 12 months (Avoid repeated freeze / thaw cycles.)

### Background

Assembly factor required for Rieske Fe-S protein UQCRCFS1 incorporation into the cytochrome b-c1(CIII) complex. Functions as a chaperone, binding to this subunit within the mitochondrial matrix and stabilizing it prior to its translocation and insertion into the late CIII dimeric intermediate within the mitochondrial inner membrane.

### Immunogen information

Immunogen:	Lym7 homolog(Mouse)
Synonyms:	C5orf31, MZM1L
Observed MW:	None
Uniprot ID :	Q5U5X0

### Application

Reactivity:	Human
Tested Application:	ELISA, IHC, IF, FC
Recommended dilution:	IHC: 1:20-1:200; IF: 1:20-1:200

### Wuhan Fine Biotech Co., Ltd.

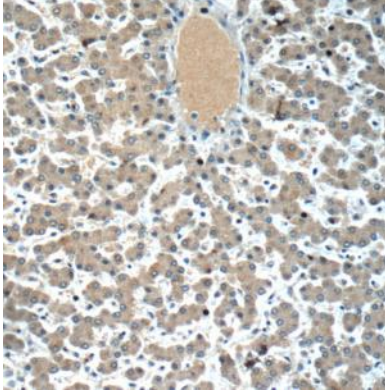
B9 Bld, High-Tech Medical Devices Park, No. 818 Gaoxin Ave. East Lake High-Tech Development Zone. Wuhan, Hubei, China(430206)

Tel : (0086)027-87384275

Fax: (0086)027-87800889

[www.fn-test.com](http://www.fn-test.com)

Image:



Immunohistochemistry of paraffin-embedded human liver using FNab04908(LYRM7 antibody) at dilution of 1:50

**Wuhan Fine Biotech Co., Ltd.**

B9 Bld, High-Tech Medical Devices Park, No. 818 Gaoxin Ave. East Lake High-Tech Development Zone. Wuhan, Hubei, China(430206)

Tel : (0086)027-87384275

Fax: (0086)027-87800889

[www.fn-test.com](http://www.fn-test.com)