

anti- LRRC1 antibody

Product Information

| | |
|---------------|---|
| Catalog No.: | FNab04852 |
| Size: | 100µg |
| Form: | liquid |
| Purification: | Immunogen affinity purified |
| Purity: | ≥95% as determined by SDS-PAGE |
| Host: | Rabbit |
| Clonality: | polyclonal |
| Clone ID: | None |
| IsoType: | IgG |
| Storage: | PBS with 0.02% sodium azide and 50% glycerol pH 7.3, -20°C for 12 months (Avoid repeated freeze / thaw cycles.) |

Background

None

Immunogen information

| | |
|--------------|----------------------------------|
| Immunogen: | leucine rich repeat containing 1 |
| Synonyms: | LANO |
| Observed MW: | None |
| Uniprot ID : | Q9BTT6 |

Application

| | |
|----------------------------|-------------------|
| Reactivity: | Human, Mouse, Rat |
| Tested Application: | ELISA, IHC |
| Recommended dilution: IHC: | 1:20-1:200 |
| Image: | |

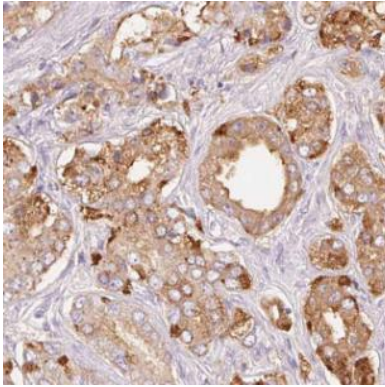
Wuhan Fine Biotech Co., Ltd.

B9 Bld, High-Tech Medical Devices Park, No. 818 Gaoxin Ave. East Lake High-Tech Development Zone. Wuhan, Hubei, China(430206)

Tel : (0086)027-87384275

Fax: (0086)027-87800889

www.fn-test.com



Immunohistochemistry of paraffin-embedded human prostate cancer slide using FNab04852(LRRC1 Antibody) at dilution of 1:50