

anti- LRP2-Specific antibody

Product Information

Catalog No.:	FNab04847
Size:	100µg
Form:	liquid
Purification:	Immunogen affinity purified
Purity:	≥95% as determined by SDS-PAGE
Host:	Rabbit
Clonality:	polyclonal
Clone ID:	None
IsoType:	IgG
Storage:	PBS with 0.02% sodium azide and 50% glycerol pH 7.3, -20°C for 12 months (Avoid repeated freeze / thaw cycles.)

Background

None

Immunogen information

Immunogen:	low density lipoprotein-related protein 2
Synonyms:	None
Observed MW:	280 kDa
UniprotID :	P98164

Application

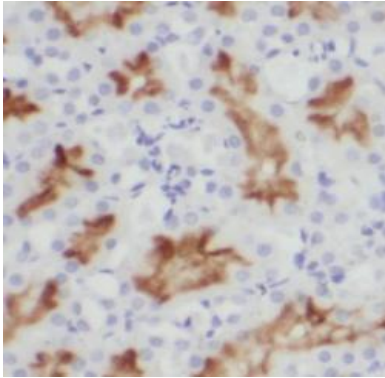
Reactivity:	Human
Tested Application:	ELISA, WB, IHC
Recommended dilution:	WB: 1:200-1:1000; IHC: 1:100-1:400
Image:	

Wuhan Fine Biotech Co., Ltd.

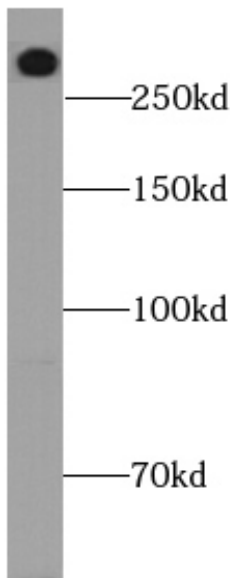
B9 Bld, High-Tech Medical Devices Park, No. 818 GaoxinAve. East Lake High-Tech Development Zone. Wuhan, Hubei, China(430206)

Tel : (0086)027-87384275

Fax: (0086)027-87800889 www.fn-test.com



Immunohistochemistry of paraffin-embedded human kidney tissue slide using FNab04847(LRP2-Specific Antibody) at dilution of 1:200



HEK-293 cells were subjected to SDS PAGE followed by western blot with FNab04847(LRP2-Specific antibody) at dilution of 1:300