

anti- LPCAT1 antibody

Product Information

Catalog No.:	FNab04826
Size:	100µg
Form:	liquid
Purification:	Protein A+G purification
Purity:	≥95% as determined by SDS-PAGE
Host:	Mouse
Clonality:	monoclonal
Clone ID:	7E4
IsoType:	IgG2a
Storage:	PBS with 0.02% sodium azide and 50% glycerol pH 7.3, -20°C for 12 months (Avoid repeated freeze / thaw cycles.)

Background

Possesses both acyltransferase and acetyltransferase activities(PubMed:16864775, PubMed:21498505). Activity is calcium-independent(By similarity). Mediates the conversion of 1-acyl-sn-glycero-3-phosphocholine(LPC) into phosphatidylcholine(PC)(PubMed:21498505). Displays a clear preference for saturated fatty acyl-CoAs, and 1-myristoyl or 1-palmitoyl LPC as acyl donors and acceptors, respectively(PubMed:16704971). May synthesize phosphatidylcholine in pulmonary surfactant, thereby playing a pivotal role in respiratory physiology(PubMed:16864775). Involved in the regulation of lipid droplet number and size(PubMed:25491198).

Immunogen information

Immunogen:	lysophosphatidylcholine acyltransferase 1
Synonyms:	AYTL2, PFAAP3
Observed MW:	55 kDa
UniprotID :	Q8NF37

Application

Wuhan Fine Biotech Co., Ltd.

B9 Bld, High-Tech Medical Devices Park, No. 818 GaoxinAve.East Lake High-Tech Development Zone.Wuhan, Hubei, China(430206)

Tel : (0086)027-87384275

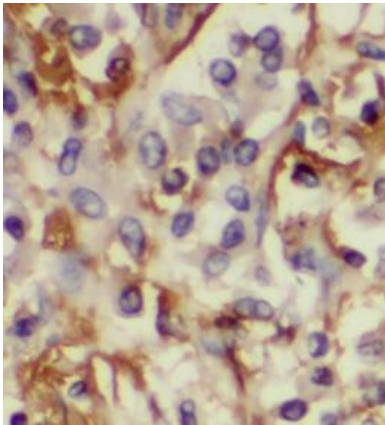
Fax: (0086)027-87800889 www.fn-test.com

Reactivity: Human

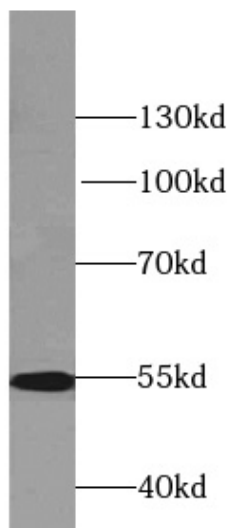
Tested Application: ELISA, WB, IF, IHC

Recommended dilution: WB: 1:5000-1:50000; IHC: 1:50-1:500; IF: 1:20-1:200

Image:



Immunohistochemistry of paraffin-embedded human lung cancer tissue slide using FNab04826(LPCAT1 Antibody) at dilution of 1:200



PC-12, C6, Raw264.7, NIH/3T3 cells were subjected to SDS PAGE followed by western blot with FNab04826(LPCAT1 Antibody) at dilution of 1:10000

Wuhan Fine Biotech Co., Ltd.

B9 Bld, High-Tech Medical Devices Park, No. 818 GaoxinAve. East Lake High-Tech Development Zone. Wuhan, Hubei, China(430206)

Tel : (0086)027-87384275

Fax: (0086)027-87800889 www.fn-test.com