

anti- LMX1B antibody

Product Information

Catalog No.:	FNab04812
Size:	100µg
Form:	liquid
Purification:	Immunogen affinity purified
Purity:	≥95% as determined by SDS-PAGE
Host:	Rabbit
Clonality:	polyclonal
Clone ID:	None
IsoType:	IgG
Storage:	PBS with 0.02% sodium azide and 50% glycerol pH 7.3, -20°C for 12 months (Avoid repeated freeze / thaw cycles.)

Background

Essential for the specification of dorsal limb fate at both the zeugopodal and autopodal levels.

Immunogen information

Immunogen:	LIM homeobox transcription factor 1, beta
Synonyms:	LIM/homeobox protein 1.2, LIM/homeobox protein LMX1B, LMX 1.2, LMX1.2, LMX1B
Observed MW:	42 kDa
Uniprot ID :	O60663

Application

Reactivity:	Human, Mouse, Rat
Tested Application:	ELISA, WB
Recommended dilution:WB:	1:500-1:1000
Image:	

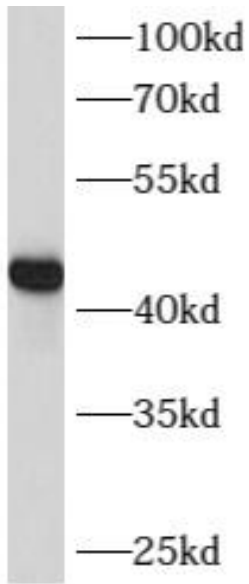
Wuhan Fine Biotech Co., Ltd.

B9 Bld, High-Tech Medical Devices Park, No. 818 Gaoxin Ave. East Lake High-Tech Development Zone. Wuhan, Hubei, China(430206)

Tel : (0086)027-87384275

Fax: (0086)027-87800889

www.fn-test.com



HeLa cells were subjected to SDS PAGE followed by western blot with FNab04812(LMX1B Antibody) at dilution of 1:600