

## anti- LMP2 antibody

### Product Information

Catalog No.:	FNab04810
Size:	100µg
Form:	liquid
Purification:	Immunogen affinity purified
Purity:	≥95% as determined by SDS-PAGE
Host:	Rabbit
Clonality:	polyclonal
Clone ID:	None
IsoType:	IgG
Storage:	PBS with 0.02% sodium azide and 50% glycerol pH 7.3, -20°C for 12 months (Avoid repeated freeze / thaw cycles.)

### Background

The proteasome is a multicatalytic proteinase complex with a highly ordered ring-shaped 20S core structure. The core structure is composed of 4 rings of 28 non-identical subunits; 2 rings are composed of 7 alpha subunits and 2 rings are composed of 7 beta subunits. Proteasomes are distributed throughout eukaryotic cells at a high concentration and cleave peptides in an ATP/ubiquitin-dependent process in a non-lysosomal pathway. An essential function of a modified proteasome, the immunoproteasome, is the processing of class I MHC peptides. This gene encodes a member of the proteasome B-type family, also known as the T1B family, that is a 20S core beta subunit. This gene is located in the class II region of the MHC (major histocompatibility complex). Expression of this gene is induced by gamma interferon and this gene product replaces catalytic subunit 1 (proteasome beta 6 subunit) in the immunoproteasome. Proteolytic processing is required to generate a mature subunit.

### Immunogen information

Immunogen:	proteasome(prosome, macropain) subunit, beta type, 9(large multifunctional peptidase 2)
Synonyms:	20S proteasome, beta1i, LMP2, Low molecular mass protein 2, Macropain chain 7, Proteasome chain 7, Proteasome subunit beta 1i, Proteasome subunit beta type 9, PSMB6i, PSMB9, RING12

### Wuhan Fine Biotech Co., Ltd.

B9 Bld, High-Tech Medical Devices Park, No. 818 GaoxinAve.East Lake High-Tech Development Zone.Wuhan, Hubei, China(430206)

Tel : (0086)027-87384275

Fax: (0086)027-87800889 [www.fn-test.com](http://www.fn-test.com)

Observed MW: 21-23 kDa

UniprotID : P28065

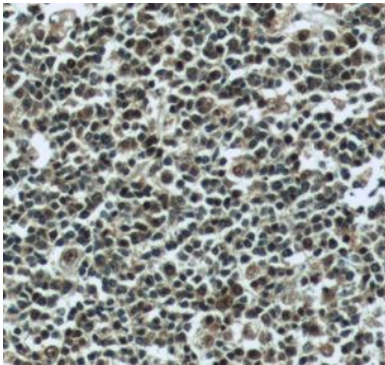
### Application

Reactivity: Human, Mouse, Rat

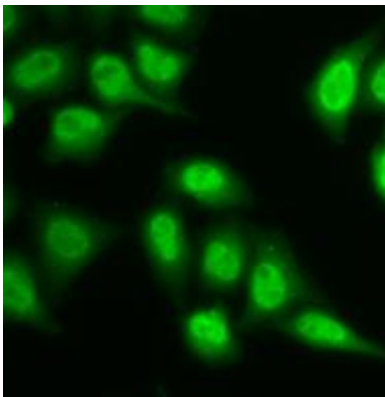
Tested Application: ELISA, WB, IHC, IP, IF

Recommended dilution: WB: 1:500-1:1000; IP: 1:200-1:1000; IHC: 1:20-1:200; IF: 1:50-1:500

Image:



Immunohistochemistry of paraffin-embedded human tonsillitis using FNab04810(PSMB9 antibody) at dilution of 1:50



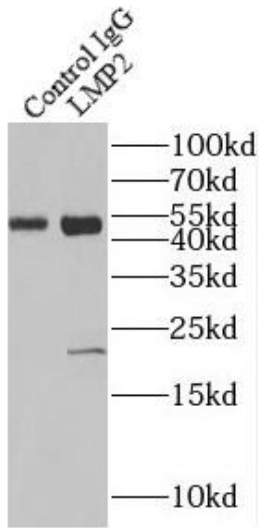
Immunofluorescent analysis of ( 10% Formaldehyde ) fixed MCF-7 cells using FNab04810 (LMP2 antibody) at dilution of 1:50 and Alexa Fluor 488-conjugated Goat Anti-Rabbit IgG(H+L)

**Wuhan Fine Biotech Co., Ltd.**

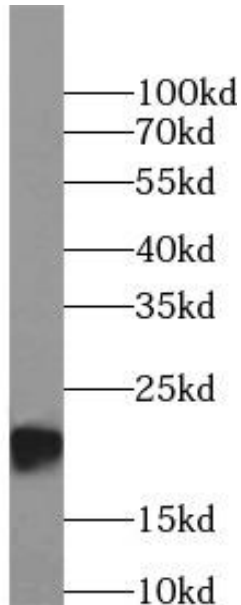
B9 Bld, High-Tech Medical Devices Park, No. 818 GaoxinAve. East Lake High-Tech Development Zone. Wuhan, Hubei, China(430206)

Tel : (0086)027-87384275

Fax: (0086)027-87800889 [www.fn-test.com](http://www.fn-test.com)



IP Result of anti-LMP2 (IP:, 4ug; Detection:  
1:300) with Raji cells lysate 2800ug.



Raji cells were subjected to SDS PAGE followed  
by western blot with FNab04810(PSMB9  
antibody) at dilution of 1:500