

anti- LMF1 antibody

Product Information

Catalog No.:	FNab04805
Size:	100µg
Form:	liquid
Purification:	Immunogen affinity purified
Purity:	≥95% as determined by SDS-PAGE
Host:	Rabbit
Clonality:	polyclonal
Clone ID:	None
IsoType:	IgG
Storage:	PBS with 0.02% sodium azide and 50% glycerol pH 7.3, -20°C for 12 months (Avoid repeated freeze / thaw cycles.)

Background

Involved in the maturation of specific proteins in the endoplasmic reticulum. Required for maturation and transport of active lipoprotein lipase(LPL) through the secretory pathway. Each LMF1 molecule chaperones 50 or more molecules of LPL.

Immunogen information

Immunogen:	lipase maturation factor 1
Synonyms:	C16orf26, TMEM112
Observed MW:	65-70 kDa
UniprotID :	Q96S06

Application

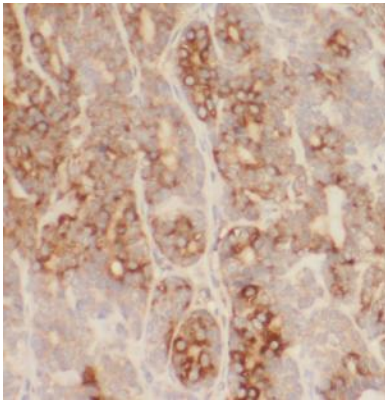
Reactivity:	Human, Mouse, Rat
Tested Application:	ELISA, WB, IHC
Recommended dilution:	WB: 1:500-1:2000; IHC: 1:20-1:200
Image:	

Wuhan Fine Biotech Co., Ltd.

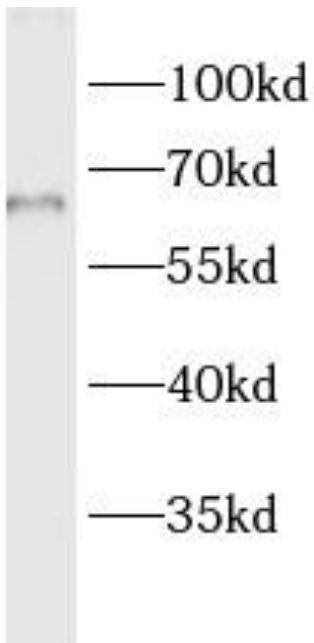
B9 Bld, High-Tech Medical Devices Park, No. 818 GaoxinAve.East Lake High-Tech Development Zone.Wuhan, Hubei, China(430206)

Tel : (0086)027-87384275

Fax: (0086)027-87800889 www.fn-test.com



Immunohistochemistry of paraffin-embedded human liver cancer tissue slide using FNab04805(LMF1 Antibody) at dilution of 1:50



SKOV-3 cells were subjected to SDS PAGE followed by western blot with FNab04805(LMF1 Antibody) at dilution of 1:600