

## anti- LGI1 antibody

### Product Information

Catalog No.:	FNab04760
Size:	100µg
Form:	liquid
Purification:	Immunogen affinity purified
Purity:	≥95% as determined by SDS-PAGE
Host:	Rabbit
Clonality:	polyclonal
Clone ID:	None
IsoType:	IgG
Storage:	PBS with 0.02% sodium azide and 50% glycerol pH 7.3, -20°C for 12 months (Avoid repeated freeze / thaw cycles.)

### Background

Regulates voltage-gated potassium channels assembled from KCNA1, KCNA4 and KCNAB1. It slows down channel inactivation by precluding channel closure mediated by the KCNAB1 subunit. Ligand for ADAM22 that positively regulates synaptic transmission mediated by AMPA-type glutamate receptors(By similarity). Plays a role in suppressing the production of MMP1/3 through the phosphatidylinositol 3-kinase/ERK pathway. May play a role in the control of neuroblastoma cell survival.

### Immunogen information

Immunogen:	leucine-rich, glioma inactivated 1
Synonyms:	EPT
Observed MW:	64 kDa, 58 kDa
Uniprot ID :	O95970

### Application

Reactivity:	Human, Mouse, Rat
Tested Application:	ELISA, WB, IHC

### Wuhan Fine Biotech Co., Ltd.

B9 Bld, High-Tech Medical Devices Park, No. 818 Gaoxin Ave. East Lake High-Tech Development Zone. Wuhan, Hubei, China(430206)

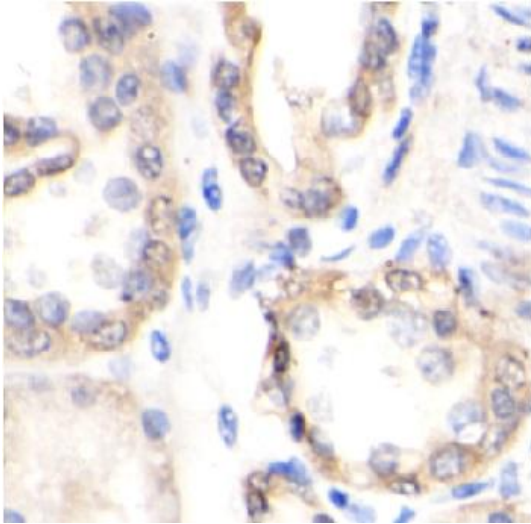
Tel : (0086)027-87384275

Fax: (0086)027-87800889

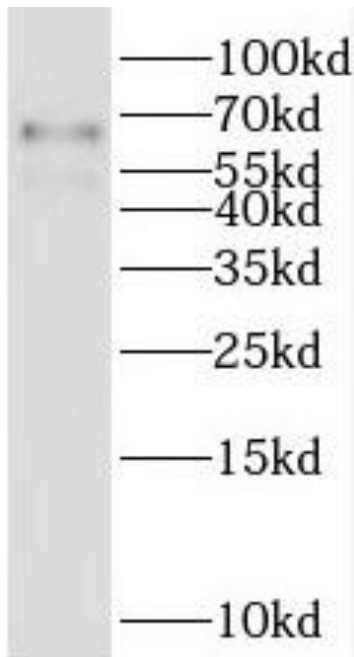
[www.fn-test.com](http://www.fn-test.com)

Recommended dilution: WB: 1:500-1:2000; IHC: 1:50-1:200

Image:



Immunohistochemistry of paraffin-embedded human breast cancer tissue slide using FNab04760(LGI1 Antibody) at dilution of 1:50



human brain tissue were subjected to SDS PAGE followed by western blot with FNab04760(LGI1 antibody) at dilution of 1:300

**Wuhan Fine Biotech Co., Ltd.**

B9 Bld, High-Tech Medical Devices Park, No. 818 Gaoxin Ave. East Lake High-Tech Development Zone. Wuhan, Hubei, China(430206)

Tel : (0086)027-87384275

Fax: (0086)027-87800889

[www.fn-test.com](http://www.fn-test.com)