

anti- LETM1 antibody

Product Information

Catalog No.:	FNab04755
Size:	100µg
Form:	liquid
Purification:	Immunogen affinity purified
Purity:	≥95% as determined by SDS-PAGE
Host:	Rabbit
Clonality:	polyclonal
Clone ID:	None
IsoType:	IgG
Storage:	PBS with 0.02% sodium azide and 50% glycerol pH 7.3, -20°C for 12 months (Avoid repeated freeze / thaw cycles.)

Background

Crucial for the maintenance of mitochondrial tubular networks and for the assembly of the supercomplexes of the respiratory chain. Required for the maintenance of the tubular shape and cristae organization.

Immunogen information

Immunogen:	leucine zipper-EF-hand containing transmembrane protein 1
Synonyms:	LETM1
Observed MW:	83 kDa
UniprotID :	O95202

Application

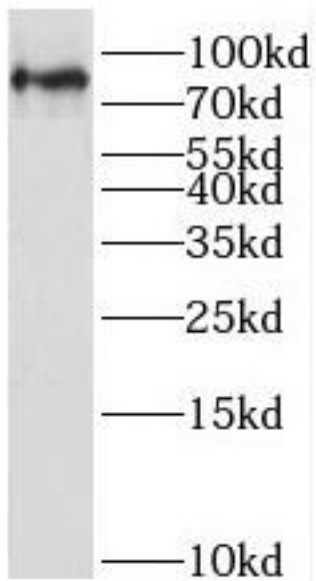
Reactivity:	Human, Mouse, Rat
Tested Application:	ELISA, WB
Recommended dilution: WB:	1:500-1:3000
Image:	

Wuhan Fine Biotech Co., Ltd.

B9 Bld, High-Tech Medical Devices Park, No. 818 GaoxinAve. East Lake High-Tech Development Zone. Wuhan, Hubei, China(430206)

Tel : (0086)027-87384275

Fax: (0086)027-87800889 www.fn-test.com



HEK-293 cells were subjected to SDS PAGE followed by western blot with FNab04755(LETM1 antibody) at dilution of 1:2000