

anti- LDHA-Specific antibody

Product Information

Catalog No.:	FNab04737
Size:	100µg
Form:	liquid
Purification:	Immunogen affinity purified
Purity:	≥95% as determined by SDS-PAGE
Host:	Rabbit
Clonality:	polyclonal
Clone ID:	None
IsoType:	IgG
Storage:	PBS with 0.02% sodium azide and 50% glycerol pH 7.3, -20°C for 12 months (Avoid repeated freeze / thaw cycles.)

Background

None

Immunogen information

Immunogen:	lactate dehydrogenase A
Synonyms:	lactate dehydrogenase A, LDH A, LDH M, LDH muscle subunit, LDH1, LDHA, PIG19
Observed MW:	37 kDa
UniprotID :	P00338

Application

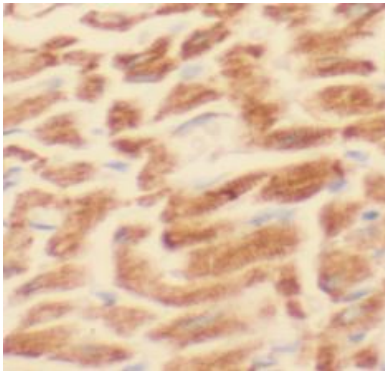
Reactivity:	Human, Mouse, Rat
Tested Application:	ELISA, WB, IHC, IF, FC, IP
Recommended dilution:	WB: 1:1000-1:4000; IP: 1:1000-1:4000; IHC: 1:20-1:200; IF: 1:20-1:200
Image:	

Wuhan Fine Biotech Co., Ltd.

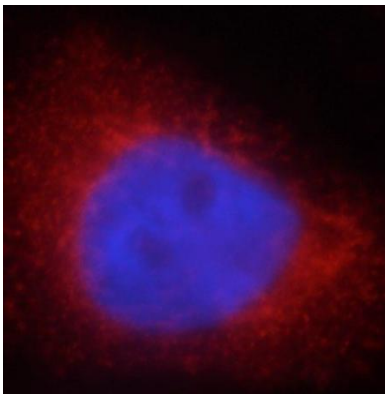
B9 Bld, High-Tech Medical Devices Park, No. 818 GaoxinAve. East Lake High-Tech Development Zone. Wuhan, Hubei, China(430206)

Tel : (0086)027-87384275

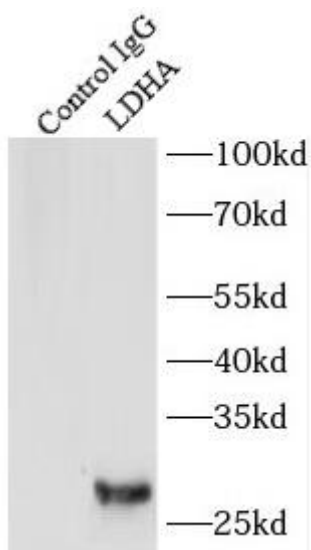
Fax: (0086)027-87800889 www.fn-test.com



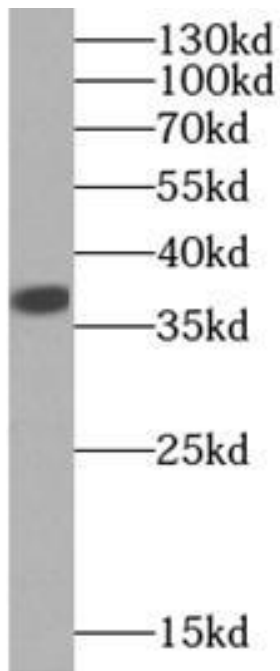
Immunohistochemistry of paraffin-embedded human heart using FNab04737(LDHA-Specific antibody) at dilution of 1:100



Immunofluorescent analysis of HeLa cells, using FNab04737 (LDHA-Specific antibody) at 1:25 dilution and Rhodamine-labeled goat anti-rabbit IgG (red)



IP Result of anti-LDHA-Specific (IP:FNab04737, 4ug; Detection:FNab04737 1:2000) with mouse kidney tissue lysate 4000ug.



A431 cells were subjected to SDS PAGE followed by western blot with FNab04737(LDHA-Specific antibody) at dilution of 1:2000