

anti- LDHAL6A antibody

Product Information

Catalog No.:	FNab04736
Size:	100µg
Form:	liquid
Purification:	Immunogen affinity purified
Purity:	≥95% as determined by SDS-PAGE
Host:	Rabbit
Clonality:	polyclonal
Clone ID:	None
IsoType:	IgG
Storage:	PBS with 0.02% sodium azide and 50% glycerol pH 7.3, -20°C for 12 months (Avoid repeated freeze / thaw cycles.)

Background

Displays an lactate dehydrogenase activity. Significantly increases the transcriptional activity of JUN, when overexpressed.

Immunogen information

Immunogen:	lactate dehydrogenase A-like 6A
Synonyms:	LDHL2
Observed MW:	30-36 kDa
UniprotID :	Q6ZMR3

Application

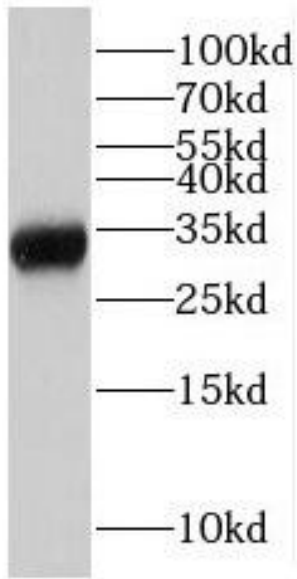
Reactivity:	Human, Mouse, Rat
Tested Application:	ELISA, WB, IF
Recommended dilution:	WB: 1:500-1:2000; IF: 1:20-1:200
Image:	

Wuhan Fine Biotech Co., Ltd.

B9 Bld, High-Tech Medical Devices Park, No. 818 GaoxinAve.East Lake High-Tech Development Zone.Wuhan, Hubei, China(430206)

Tel : (0086)027-87384275

Fax: (0086)027-87800889 www.fn-test.com



mouse liver tissue were subjected to SDS PAGE followed by western blot with FNab04736(LDHAL6A antibody) at dilution of 1:500