

anti- KRAS antibody

Product Information

Catalog No.:	FNab04641
Size:	100µg
Form:	liquid
Purification:	Immunogen affinity purified
Purity:	≥95% as determined by SDS-PAGE
Host:	Rabbit
Clonality:	polyclonal
Clone ID:	None
IsoType:	IgG
Storage:	PBS with 0.02% sodium azide and 50% glycerol pH 7.3, -20°C for 12 months (Avoid repeated freeze / thaw cycles.)

Background

Ras proteins bind GDP/GTP and possess intrinsic GTPase activity. Plays an important role in the regulation of cell proliferation(PubMed:23698361, PubMed:22711838). Plays a role in promoting oncogenic events by inducing transcriptional silencing of tumor suppressor genes(TSGs) in colorectal cancer(CRC) cells in a ZNF304-dependent manner(PubMed:24623306).

Immunogen information

Immunogen:	v-Ki-ras2 Kirsten rat sarcoma viral oncogene homolog
Synonyms:	C K RAS, c Ki ras, GTPaseKRas, K Ras 2, K RAS2A, K RAS2B, K RAS4A, K RAS4B, KI RAS, KRAS, KRAS1, KRAS2, KRAS2B specific, Krasa, Krasb, NS3, RASK2
Observed MW:	21 kDa
UniprotID :	P01116

Application

Reactivity:	Human, Mouse, Rat
-------------	-------------------

Wuhan Fine Biotech Co., Ltd.

B9 Bld, High-Tech Medical Devices Park, No. 818 GaoxinAve.East Lake High-Tech Development Zone.Wuhan, Hubei, China(430206)

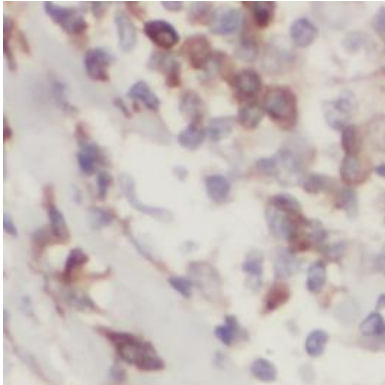
Tel :(0086)027-87384275

Fax: (0086)027-87800889 www.fn-test.com

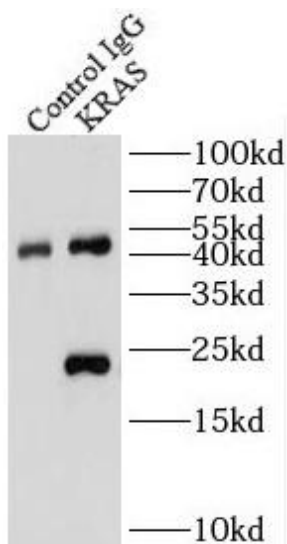
Tested Application: ELISA, WB, IP, IHC

Recommended dilution: WB: 1:500 - 1:1000; IHC: 1:50 - 1:200; IP: 1:50 - 1:200

Image:



Immunohistochemistry of paraffin-embedded human lung cancer tissue slide using FNab04641(KRAS Antibody) at dilution of 1:100



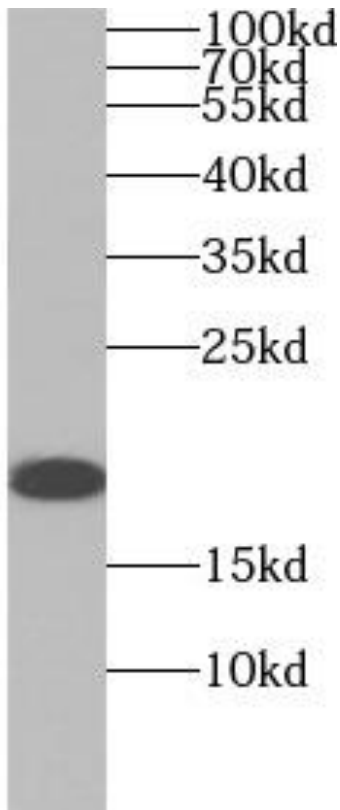
IP result of anti-KRAS(IP:FNab04641, 4ug; Detection:FNab04641 1:1000) with HeLa cells lysate 2680 ug

Wuhan Fine Biotech Co., Ltd.

B9 Bld, High-Tech Medical Devices Park, No. 818 GaoxinAve. East Lake High-Tech Development Zone. Wuhan, Hubei, China(430206)

Tel : (0086)027-87384275

Fax: (0086)027-87800889 www.fn-test.com



mouse brain tissue were subjected to SDS PAGE followed by western blot with FNab04641(KRAS antibody) at dilution of 1:1000