

anti- KLHL3 antibody

Product Information

Catalog No.:	FNab04623
Size:	100µg
Form:	liquid
Purification:	Immunogen affinity purified
Purity:	≥95% as determined by SDS-PAGE
Host:	Rabbit
Clonality:	polyclonal
Clone ID:	None
IsoType:	IgG
Storage:	PBS with 0.02% sodium azide and 50% glycerol pH 7.3, -20°C for 12 months (Avoid repeated freeze / thaw cycles.)

Background

Substrate-specific adapter of a BCR(BTB-CUL3-RBX1) E3 ubiquitin ligase complex that acts as a regulator of ion transport in the distal nephron. The BCR(KLHL3) complex acts by mediating ubiquitination of WNK4, an inhibitor of potassium channel KCNJ1, leading to WNK4 degradation.

Immunogen information

Immunogen:	kelch-like 3(Drosophila)
Synonyms:	KIAA1129
Observed MW:	65 kDa
UniprotID :	Q9UH77

Application

Reactivity:	Human, Mouse, Rat
Tested Application:	ELISA, WB, IHC, IP
Recommended dilution:	WB: 1:500-1:2000; IP: 1:200-1:1000; IHC: 1:20-1:200

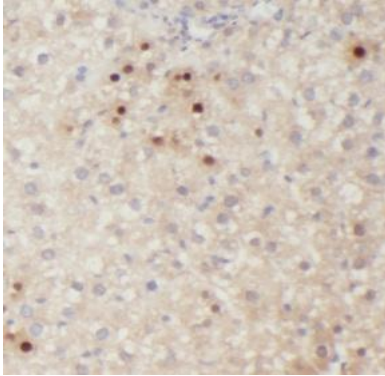
Wuhan Fine Biotech Co., Ltd.

B9 Bld, High-Tech Medical Devices Park, No. 818 GaoxinAve. East Lake High-Tech Development Zone. Wuhan, Hubei, China(430206)

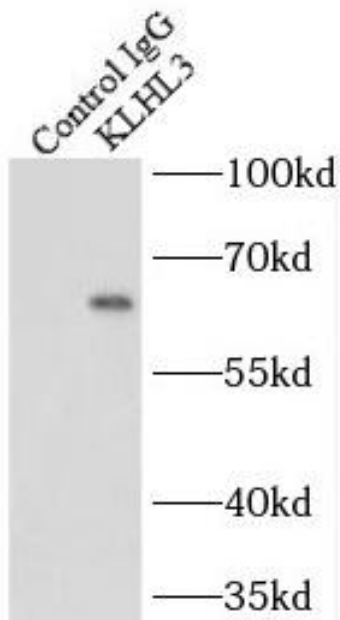
Tel : (0086)027-87384275

Fax: (0086)027-87800889 www.fn-test.com

Image:



Immunohistochemistry of paraffin-embedded human liver using FNab04623(KLHL3 antibody) at dilution of 1:100



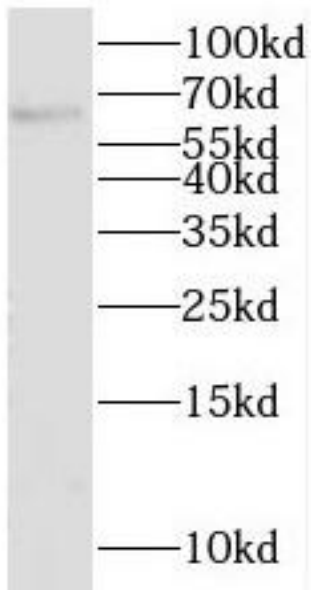
IP Result of anti-KLHL3 (IP:FNab04623, 4ug; Detection:FNab04623 1:700) with HepG2 cells lysate 2800ug.

Wuhan Fine Biotech Co., Ltd.

B9 Bld, High-Tech Medical Devices Park, No. 818 GaoxinAve. East Lake High-Tech Development Zone. Wuhan, Hubei, China(430206)

Tel : (0086)027-87384275

Fax: (0086)027-87800889 www.fn-test.com



HepG2 cells were subjected to SDS PAGE followed by western blot with FNab04623(KLHL3 antibody) at dilution of 1:800