

anti- KIF26B antibody

Product Information

Catalog No.:	FNab04559
Size:	100µg
Form:	liquid
Purification:	Immunogen affinity purified
Purity:	≥95% as determined by SDS-PAGE
Host:	Rabbit
Clonality:	polyclonal
Clone ID:	None
IsoType:	IgG
Storage:	PBS with 0.02% sodium azide and 50% glycerol pH 7.3, -20°C for 12 months (Avoid repeated freeze / thaw cycles.)

Background

Essential for embryonic kidney development. Plays an important role in the compact adhesion between mesenchymal cells adjacent to the ureteric buds, possibly by interacting with MYH10. This could lead to the establishment of the basolateral integrity of the mesenchyme and the polarized expression of ITGA8, which maintains the GDNF expression required for further ureteric bud attraction. Although it seems to lack ATPase activity it is constitutively associated with microtubules(By similarity).

Immunogen information

Immunogen:	kinesin family member 26B
Synonyms:	KIF26B, kinesin family member 26B, Kinesin like protein KIF26B
Observed MW:	224-230 kDa or 17-22 kDa
Uniprot ID :	Q2KJY2

Application

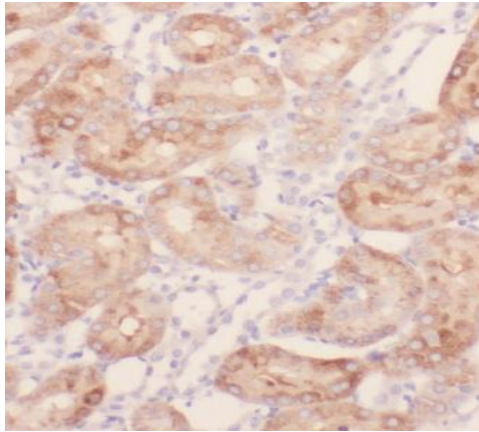
Reactivity:	Human
Tested Application:	ELISA, IHC, WB

Wuhan Fine Biotech Co., Ltd.

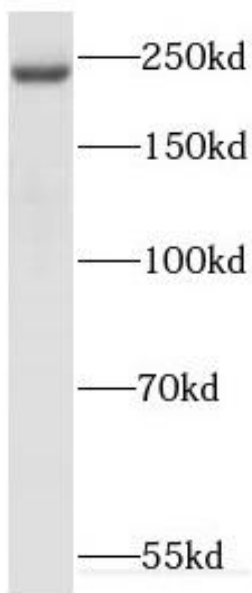
B9 Bld, High-Tech Medical Devices Park, No. 818 Gaoxin Ave. East Lake High-Tech Development Zone. Wuhan, Hubei, China(430206)

Recommended dilution: WB: 1:500 - 1:1000; IHC: 1:50 - 1:200

Image:



Immunohistochemistry of paraffin-embedded human kidney using FNab04559(KIF26B antibody) at dilution of 1:50



HEK-293 cells were subjected to SDS PAGE followed by western blot with FNab04559(KIF26B Antibody) at dilution of 1:1000

Wuhan Fine Biotech Co., Ltd.

B9 Bld, High-Tech Medical Devices Park, No. 818 Gaoxin Ave. East Lake High-Tech Development Zone. Wuhan, Hubei, China(430206)

Tel : (0086)027-87384275

Fax: (0086)027-87800889

www.fn-test.com