

anti- KIF20A antibody

Product Information

Catalog No.:	FNab04557
Size:	100µg
Form:	liquid
Purification:	Immunogen affinity purified
Purity:	≥95% as determined by SDS-PAGE
Host:	Rabbit
Clonality:	polyclonal
Clone ID:	None
IsoType:	IgG
Storage:	PBS with 0.02% sodium azide and 50% glycerol pH 7.3, -20°C for 12 months (Avoid repeated freeze / thaw cycles.)

Background

Mitotic kinesin required for chromosome passenger complex(CPC)-mediated cytokinesis. Following phosphorylation by PLK1, involved in recruitment of PLK1 to the central spindle. Interacts with guanosinetriphosphate(GTP)-bound forms of RAB6A and RAB6B. May act as a motor required for the retrograde RAB6 regulated transport of Golgi membranes and associated vesicles along microtubules. Has a microtubule plus end-directed motility.

Immunogen information

Immunogen:	kinesin family member 20A
Synonyms:	MKLP2, RAB6KIFL
Observed MW:	100 kDa
UniprotID :	O95235

Application

Reactivity:	Human, Mouse, Rat
Tested Application:	ELISA, WB, IP
Recommended dilution:	WB: 1:500-1:2000; IP: 1:200-1:2000

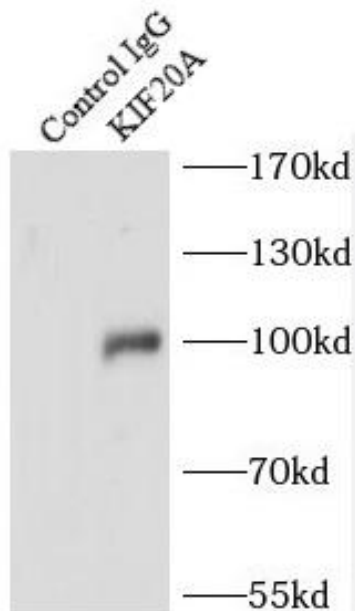
Wuhan Fine Biotech Co., Ltd.

B9 Bld, High-Tech Medical Devices Park, No. 818 GaoxinAve.East Lake High-Tech Development Zone.Wuhan, Hubei, China(430206)

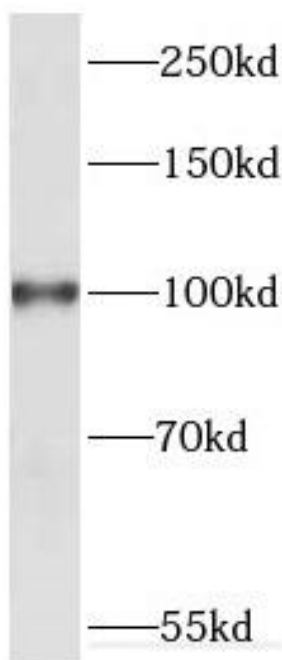
Tel : (0086)027-87384275

Fax: (0086)027-87800889 www.fn-test.com

Image:



IP Result of anti-KIF20A (IP:FNab04557, 4ug;
Detection:FNab04557 1:500) with HEK-293 cells
lysate 1200ug.



HEK-293 cells were subjected to SDS PAGE
followed by western blot with
FNab04557(KIF20A antibody) at dilution of 1:500

Wuhan Fine Biotech Co., Ltd.

B9 Bld, High-Tech Medical Devices Park, No. 818 GaoxinAve. East Lake High-Tech Development Zone. Wuhan, Hubei, China(430206)

Tel : (0086)027-87384275

Fax: (0086)027-87800889 www.fn-test.com