

## anti- Jph2 antibody

### Product Information

Catalog No.:	FNab04452
Size:	100µg
Form:	liquid
Purification:	Immunogen affinity purified
Purity:	≥95% as determined by SDS-PAGE
Host:	Rabbit
Clonality:	polyclonal
Clone ID:	None
IsoType:	IgG
Storage:	PBS with 0.02% sodium azide and 50% glycerol pH 7.3, -20°C for 12 months (Avoid repeated freeze / thaw cycles.)

### Background

Junctophilins contribute to the formation of junctional membrane complexes(JMCs) which link the plasma membrane with the endoplasmic or sarcoplasmic reticulum in excitable cells. Provides a structural foundation for functional cross-talk between the cell surface and intracellular calcium release channels. JPH2 is necessary for proper intracellular Ca(2+) signaling in cardiac myocytes via its involvement in ryanodine receptor-mediated calcium ion release. Contributes to the construction of skeletal muscle triad junctions.

### Immunogen information

Immunogen:	junctophilin 2
Synonyms:	JP2
Observed MW:	None
Uniprot ID :	Q9BR39

### Application

Reactivity:	Human
Tested Application:	ELISA, IHC

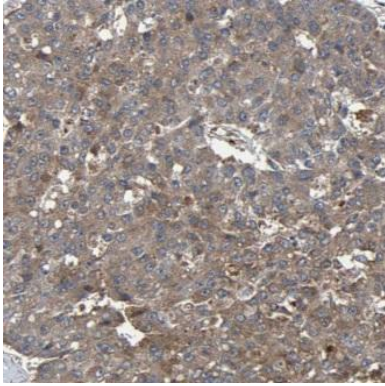
### Wuhan Fine Biotech Co., Ltd.

B9 Bld, High-Tech Medical Devices Park, No. 818 Gaoxin Ave. East Lake High-Tech Development Zone. Wuhan, Hubei, China(430206)

---

Recommended dilution:IHC: 1:20-1:200

Image:



Immunohistochemistry of paraffin-embedded human pancreas cancer tissue slide using FNab04452(Jph2 Antibody) at dilution of 1:50